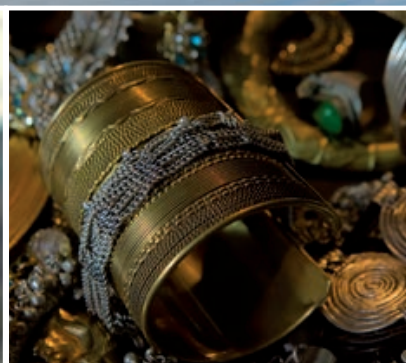
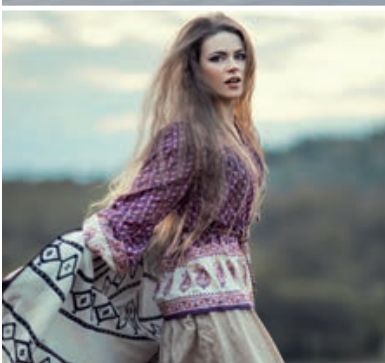


ETHNO





ETHNO

48

48er Fliesen, rapportgenau
48 x 48 tiles, critical cut
Dalles 48 x 48 cm, avec raccord



Verlegebeispiel

Verlegung ohne Versatz, zufällig
Kombination aus
15004-A01 und 15005-A01

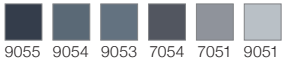
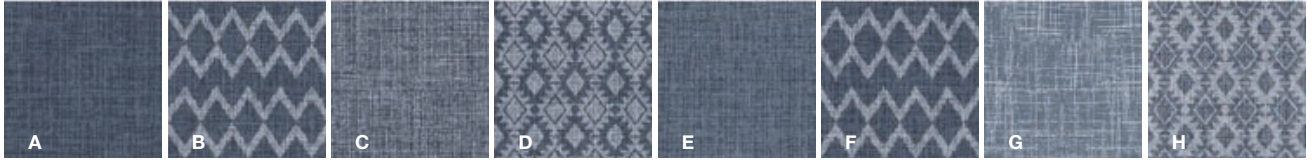
Installation example

Installation without pattern mismatch, randomly
Combination of 15004-A01 and 15005-A01

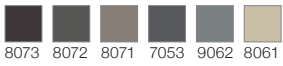
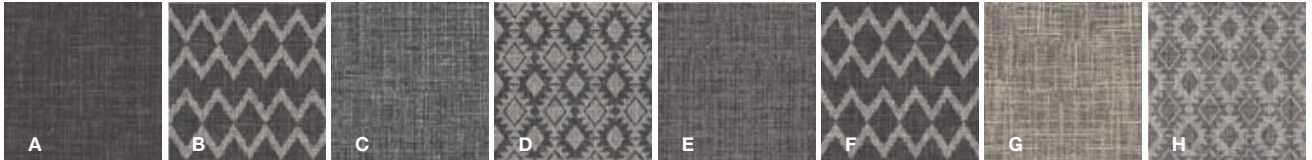
Exemple pour la pose

Pose sans déport, aléatoire
Dessin 15004-A01 en combinaison
avec dessin 15005-A01

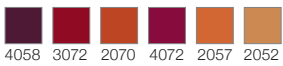
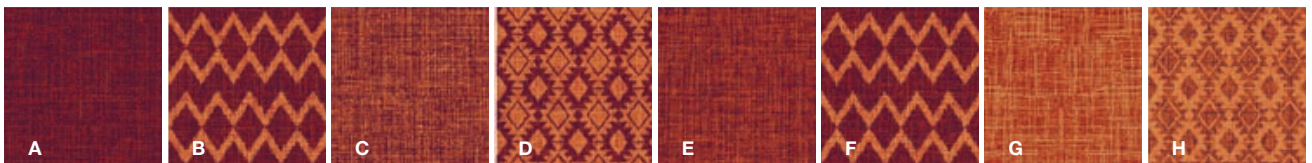
15004-A01



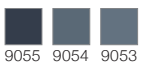
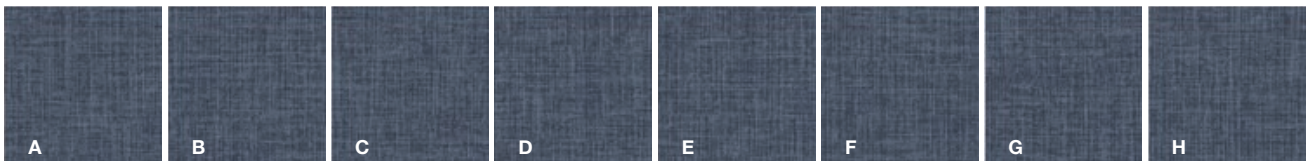
15004-A02



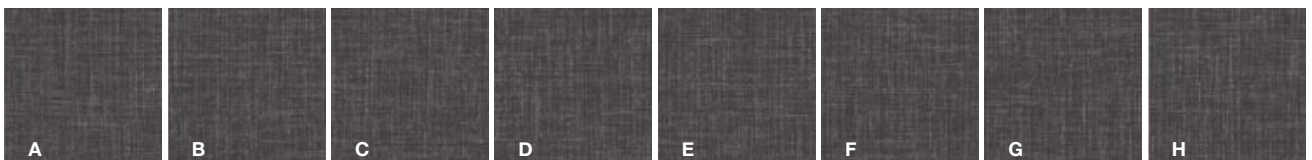
15004-A03



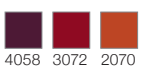
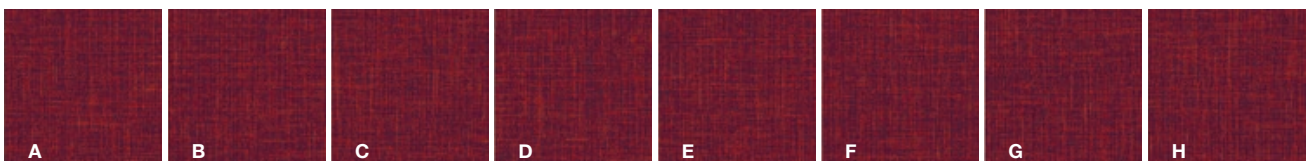
15005-A01



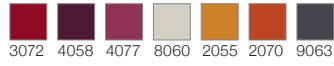
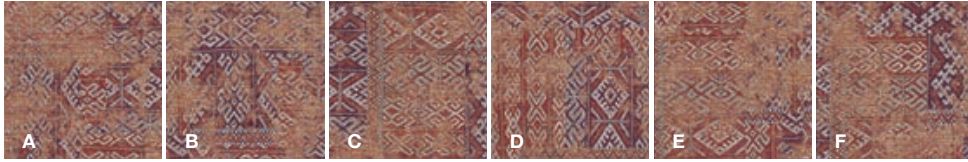
15005-A02



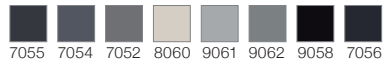
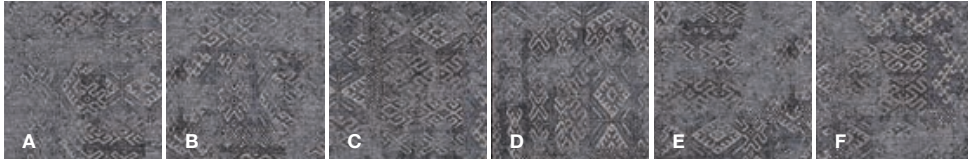
15005-A03



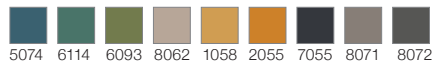
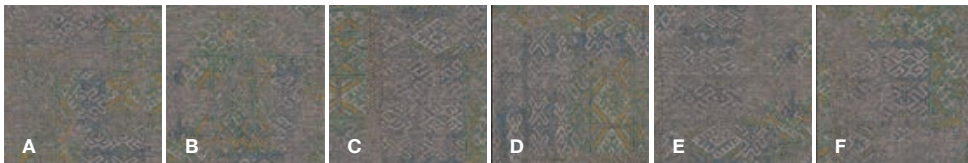
15006-A01



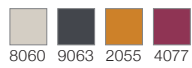
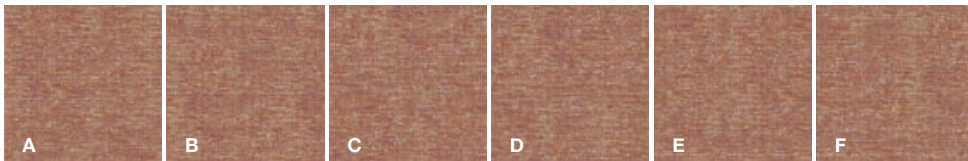
15006-A02



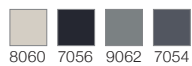
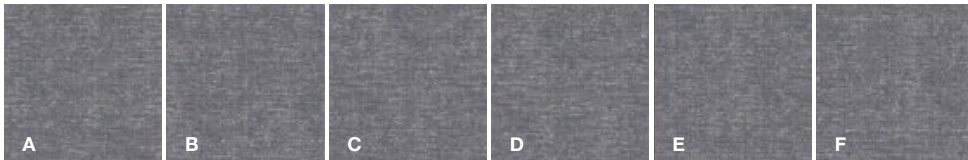
15006-A03



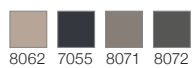
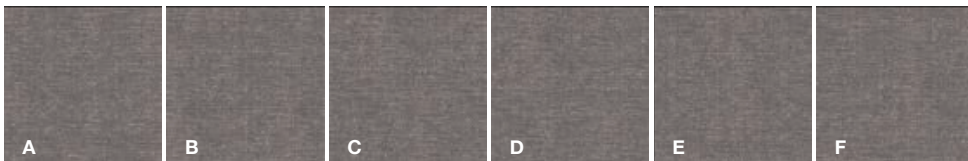
15007-A01



15007-A02



15007-A03



ETHNO

60er Fliesen, rapportgenau
60 x 60 tiles, critical cut
Dalles 60 x 60 cm, avec raccord

60



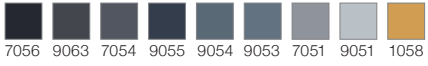
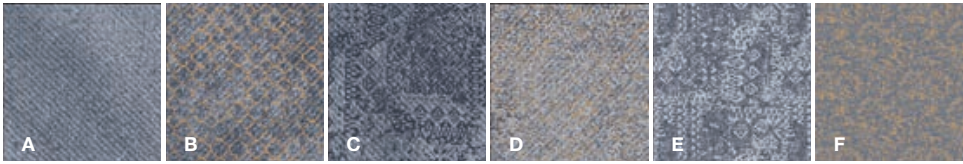
Verlegebeispiel · Verlegung ohne Versatz, zufällig
Kombination aus 15006-A01 und 15007-A01

Installation example · Installation without pattern mismatch, randomly
Combination of 15006-A01 and 15007-A01

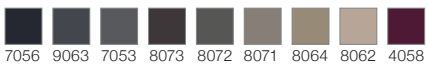
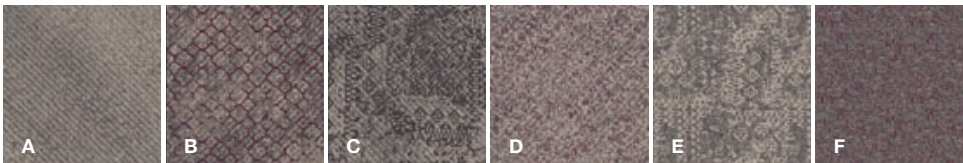
Exemple pour la pose · Pose sans déport, aléatoire
Dessin 15006-A01 en combinaison avec dessin 15007-A01



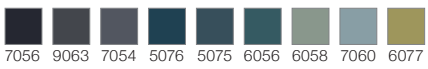
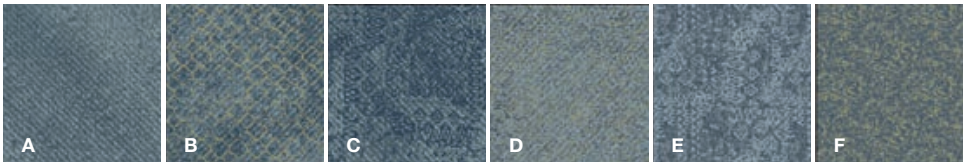
15002-A01



15002-A02



15002-A03



Verlegebeispiel

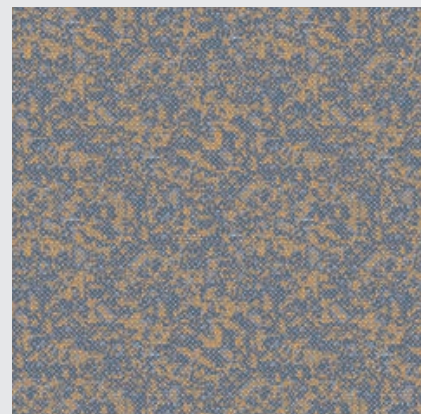
Verlegung ohne Versatz, zufällig
15002-A01

Installation example

Installation without pattern mismatch, randomly
15002-A01

Exemple pour la pose

Pose sans déport, aléatoire
15002-A01



ETHNO

60er Fliesen, rapportgenau
60 x 60 tiles, critical cut
Dalles 60 x 60 cm, avec raccord

60



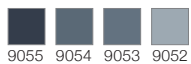
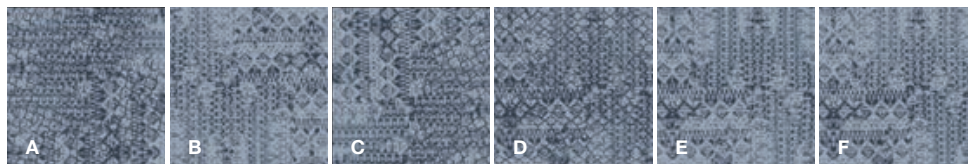
ETHNO

60er Fliesen, rapportgenau
60 x 60 tiles, critical cut
Dalles 60 x 60 cm, avec raccord

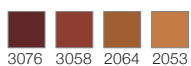
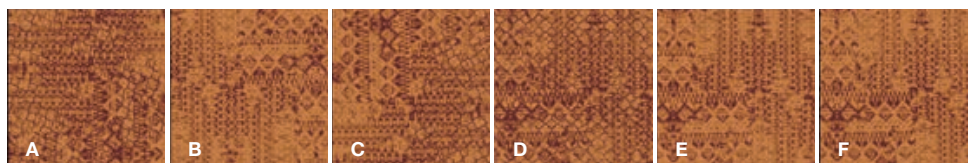
60



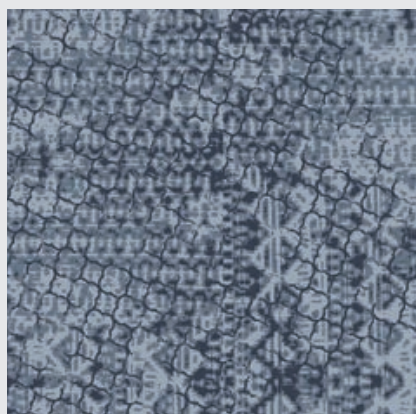
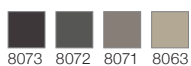
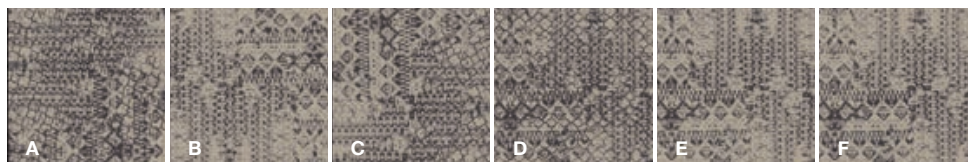
15000-A01



15000-A02



15000-A03



Verlegebeispiel

Verlegung ohne Versatz, zufällig
15000-A01

Installation example

Installation without pattern mismatch, randomly
15000-A01

Exemple pour la pose

Pose sans déport, aléatoire
15000-A01



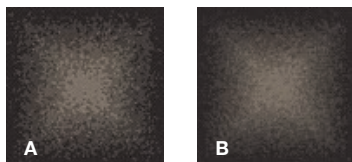


15030-A01



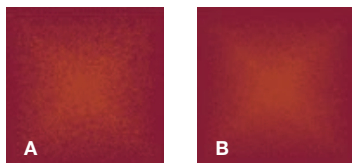
9055 5054

15030-A02



9060 8064

15030-A03



4057 2070



Verlegebeispiel

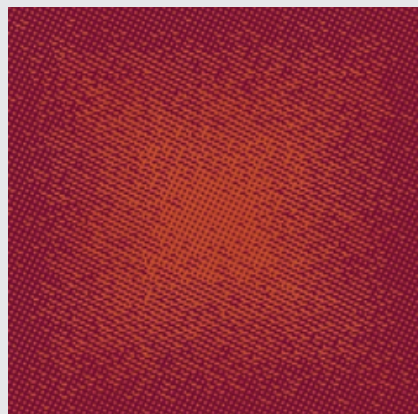
Verlegung ohne Versatz, regelmäßig
15030-A03

Installation example

Installation without pattern mismatch, regularly
15030-A03

Exemple pour la pose

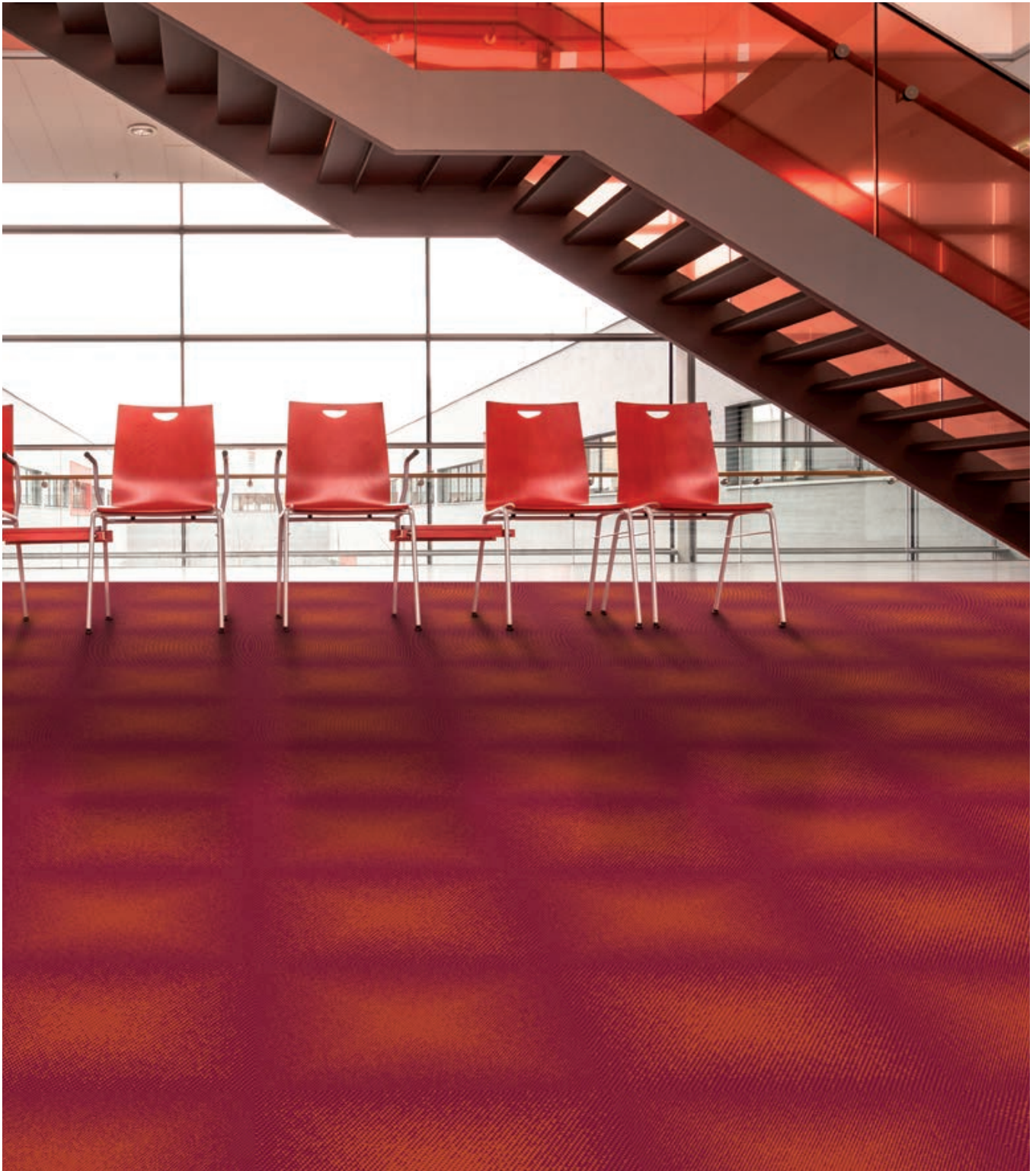
Pose sans déport, régulièrement
15030-A03

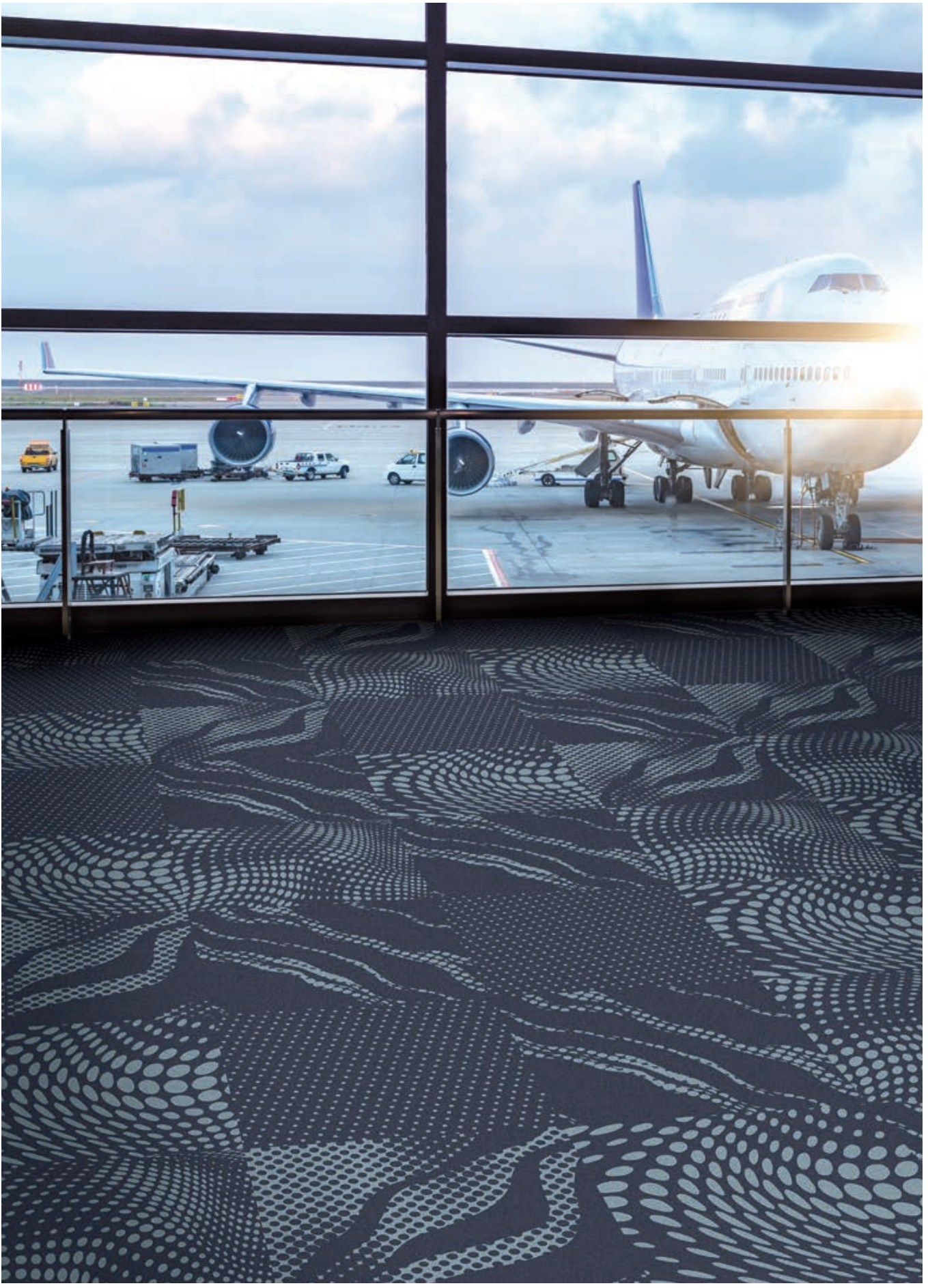


RETRO

48er Fliesen, rapportgenau
48 x 48 tiles, critical cut
Dalles 48 x 48 cm, avec raccord

48



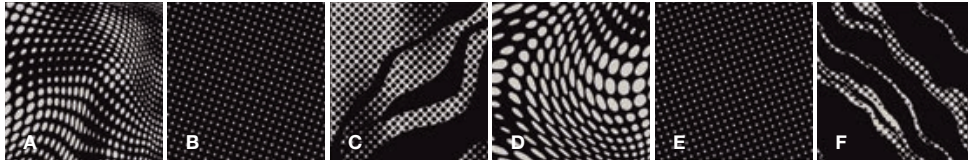


RETRO

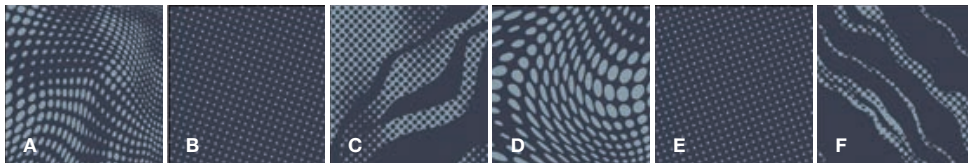
60er Fliesen, rapportgenau
60 x 60 tiles, critical cut
Dalles 60 x 60 cm, avec raccord

60

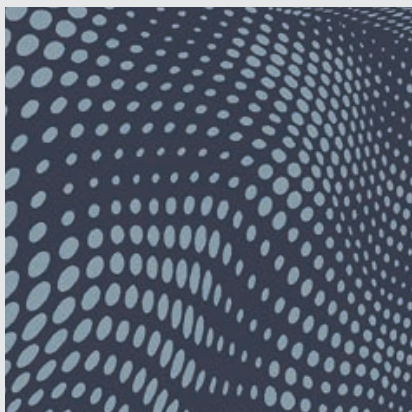
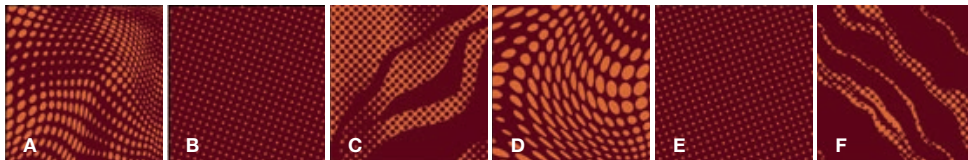
15026-A01



15026-A02



15026-A03



Verlegebeispiel

Verlegung ohne Versatz, zufällig
15026-A02

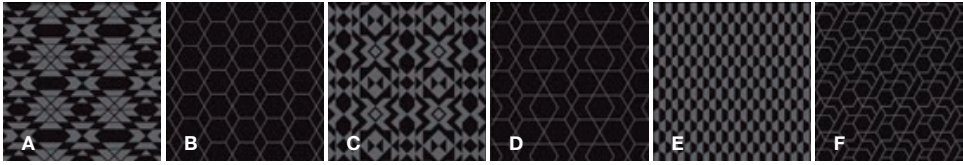
Installation example

Installation without pattern mismatch, randomly
15026-A02

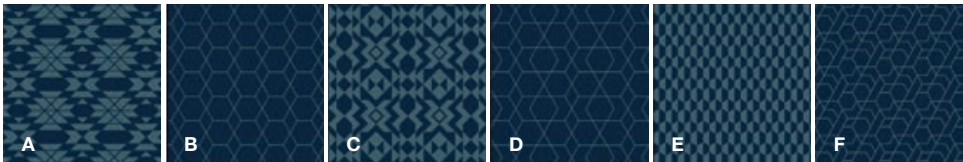
Exemple pour la pose

Pose sans déport, aléatoire
15026-A02

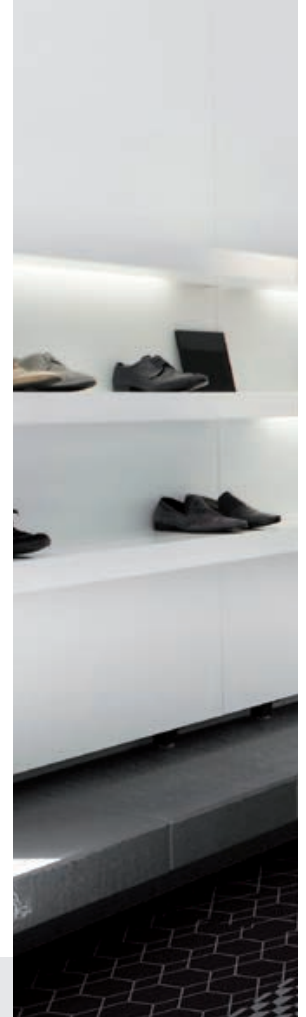
15032-A01



15032-A02



15032-A03



Verlegebeispiel

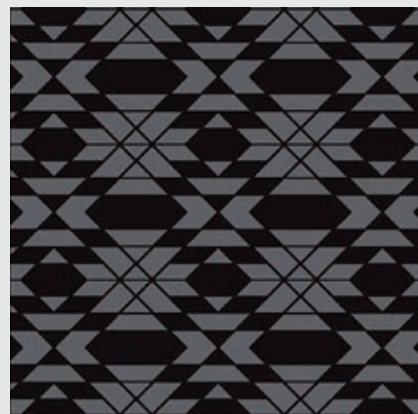
Verlegung ohne Versatz, zufällig
15032-A01

Installation example

Installation without pattern mismatch, randomly
15032-A01

Exemple pour la pose

Pose sans déport, aléatoire
15032-A01



RETRO

60er Fliesen, rapportgenau
60 x 60 tiles, critical cut
Dalles 60 x 60 cm, avec raccord

60

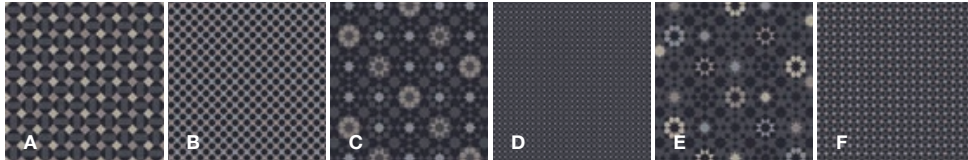


RETRO

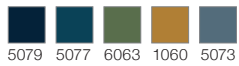
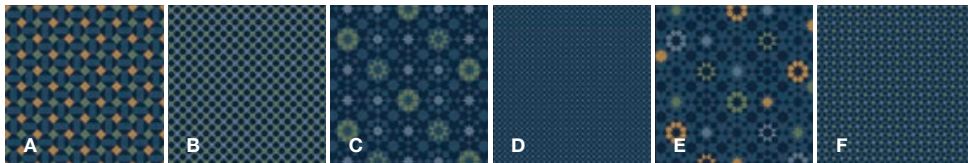
60er Fliesen, rapportgenau
60 x 60 tiles, critical cut
Dalles 60 x 60 cm, avec raccord

60

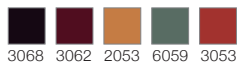
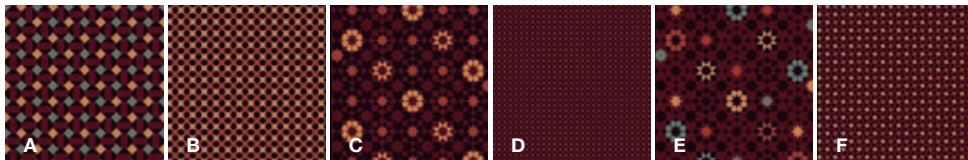
15028-A01



15028-A02



15028-A03



Verlegebeispiel

Verlegung ohne Versatz, zufällig
15028-A01

Installation example

Installation without pattern mismatch, randomly
15028-A01

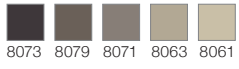
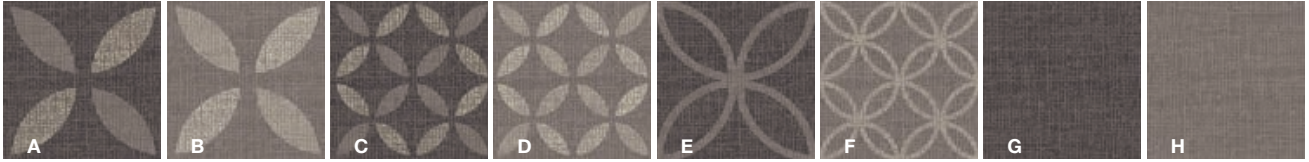
Exemple pour la pose

Pose sans déport, aléatoire
15028-A01

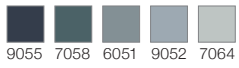




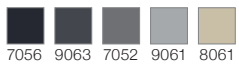
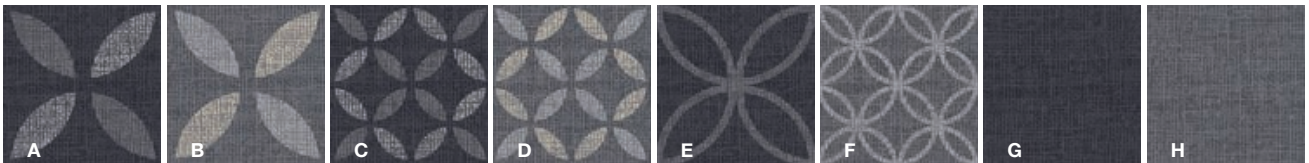
15024-A01



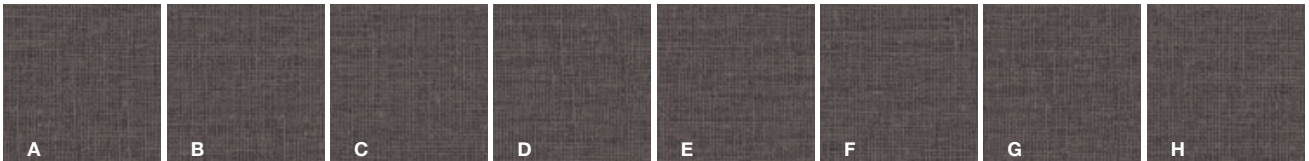
15024-A02



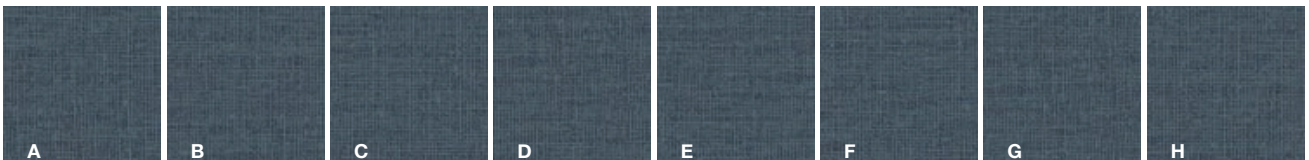
15024-A03



15025-A01



15025-A02



15025-A03



RETRO

48

48er Fliesen, rapportgenau
48 x 48 tiles, critical cut
Dalles 48 x 48 cm, avec raccord



Verlegebeispiel

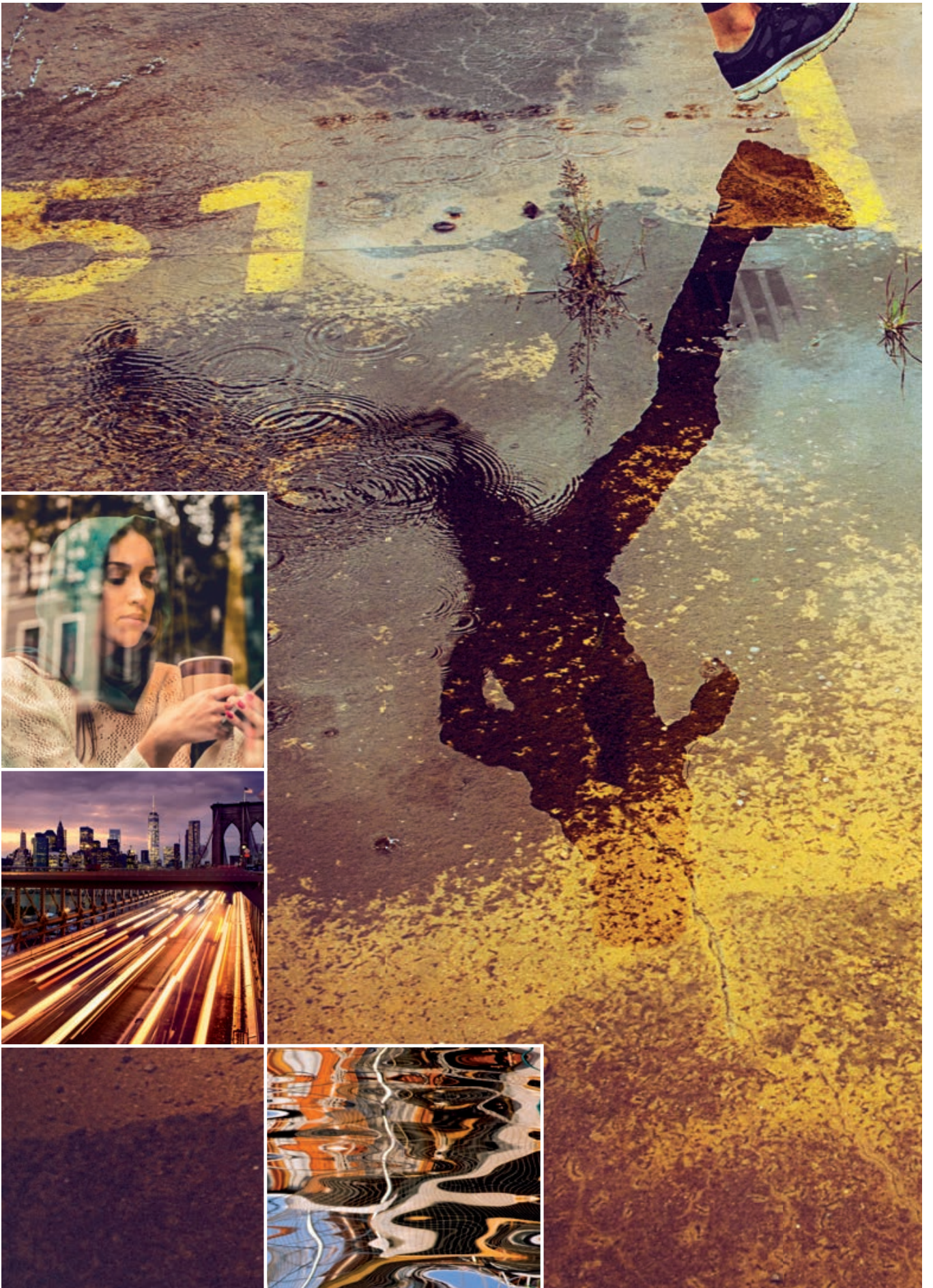
Verlegung ohne Versatz, zufällig
Kombination aus
15024-A01 und 15025-A01

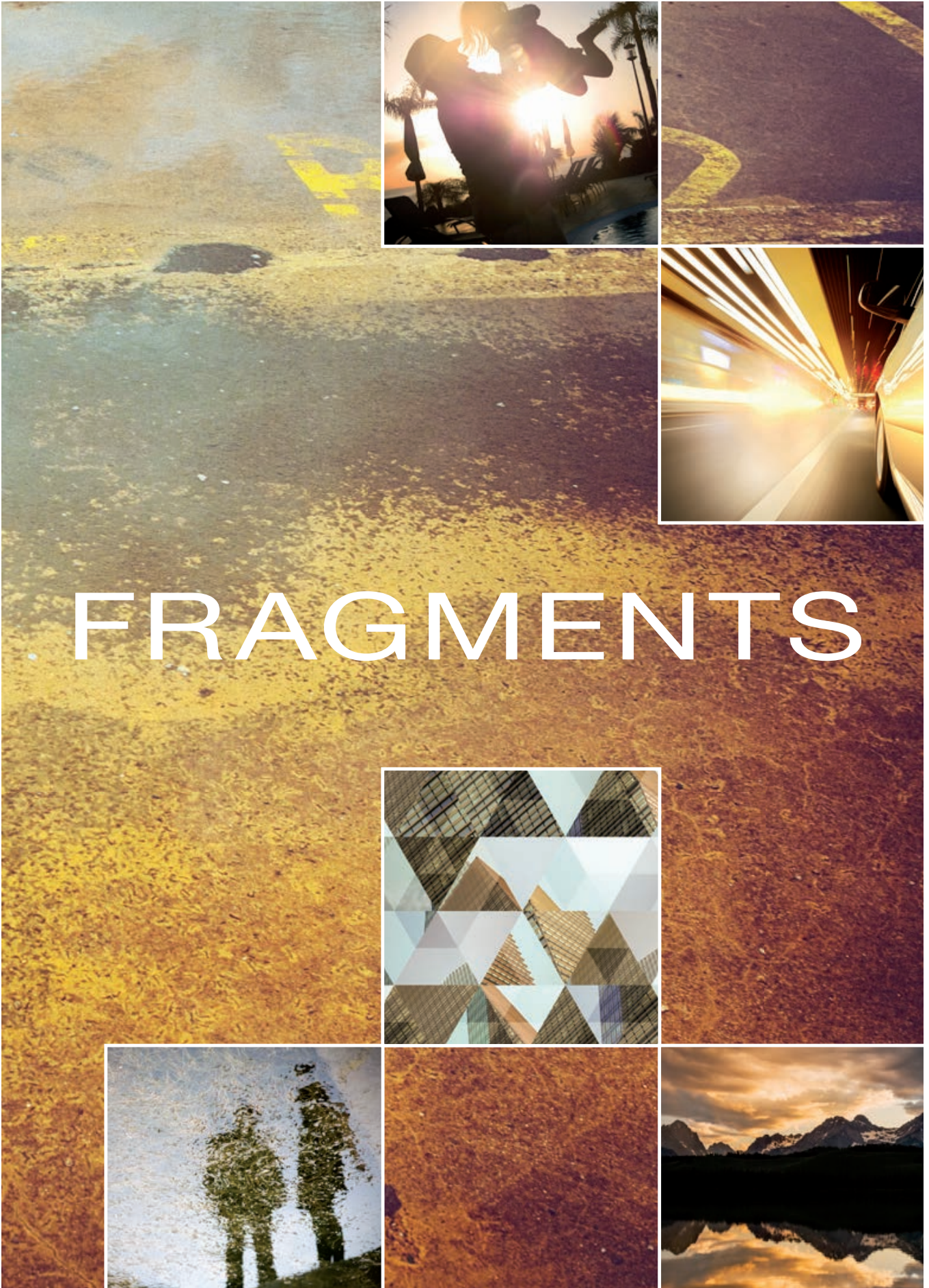
Installation example

Installation without pattern mismatch, randomly
Combination of 15024-A01 and 15025-A01

Exemple pour la pose

Pose sans déport, aléatoire
Dessin 15024-A01 en combinaison
avec dessin 15025-A01

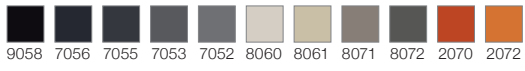
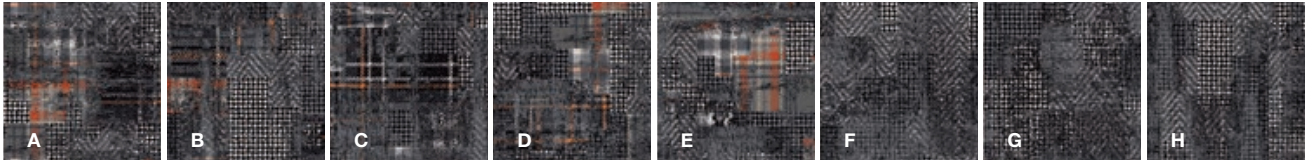




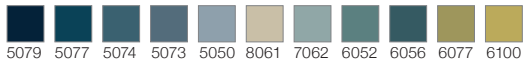
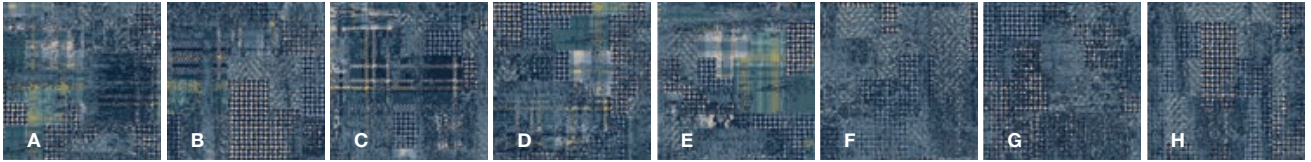
FRAGMENTS



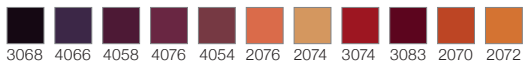
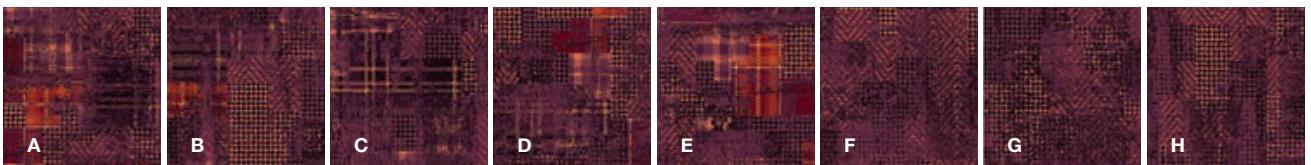
15018-A01



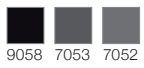
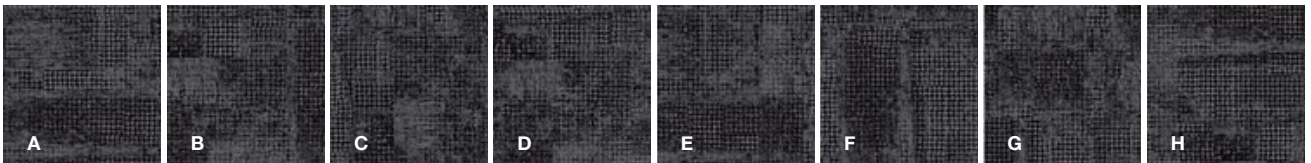
15018-A02



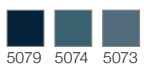
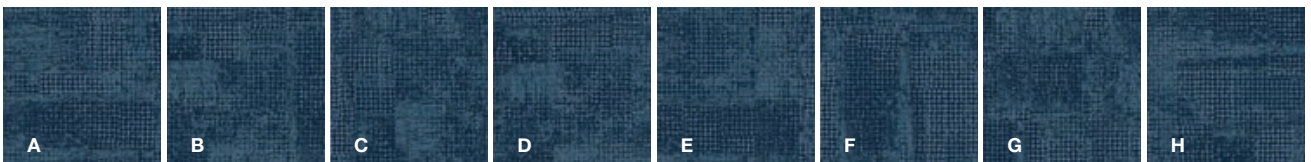
15018-A03



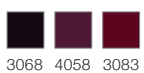
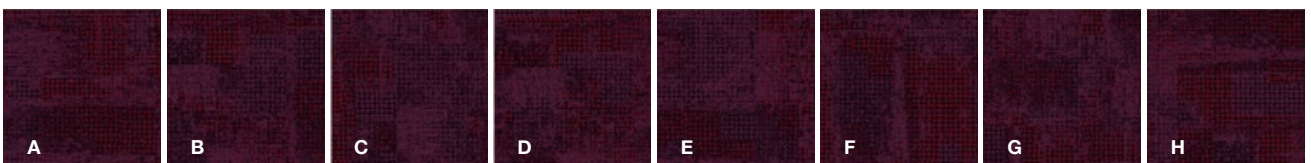
15019-A01



15019-A02



15019-A03



FRAGMENTS

48

48er Fliesen, rapportgenau
48 x 48 tiles, critical cut
Dalles 48 x 48 cm, avec raccord



Verlegebeispiel · Verlegung ohne Versatz, zufällig
Kombination aus 15018-A01 und 15019-A01

Installation example · Installation without pattern mismatch, randomly
Combination of 15018-A01 and 15019-A01

Exemple pour la pose · Pose sans déport, aléatoire
Dessin 15018-A01 en combinaison avec dessin 15019-A01

FRAGMENTS

60

60er Fliesen, rapportgenau
60 x 60 tiles, critical cut
Dalles 60 x 60 cm, avec raccord



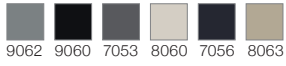
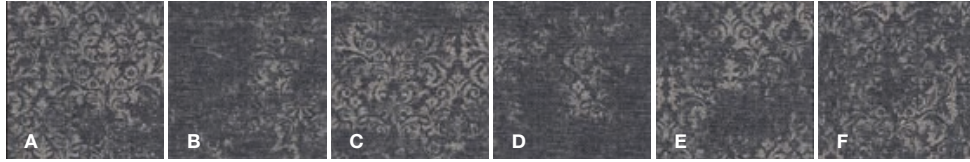
Verlegebeispiel · Verlegung ohne Versatz, zufällig
Kombination aus 15012-A01 und 15015-A01

Installation example · Installation without pattern mismatch, randomly
Combination of 15012-A01 and 15015-A01

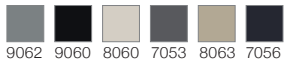
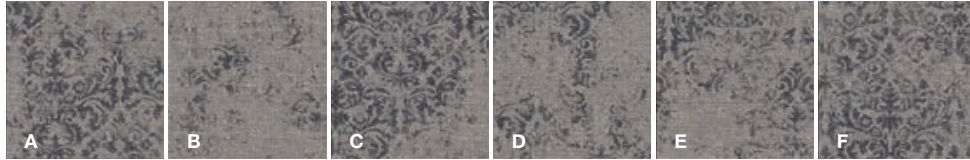
Exemple pour la pose · Pose sans déport, aléatoire
Dessin 15012-A01 en combinaison avec dessin 15015-A01



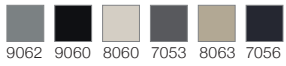
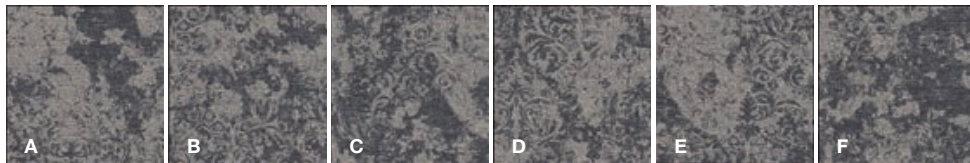
15010-A01



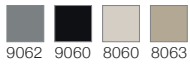
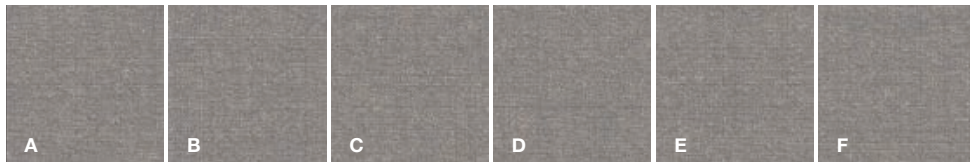
15012-A01



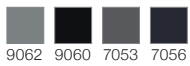
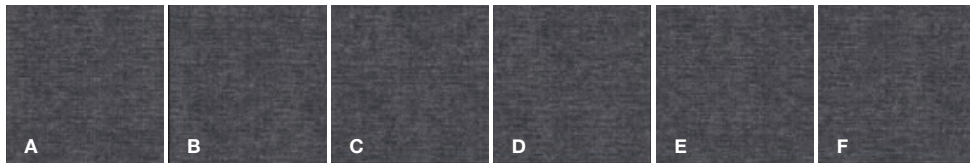
15014-A01



15015-A01



15015-A02



FRAGMENTS

60

60er Fliesen, rapportgenau
60 x 60 tiles, critical cut
Dalles 60 x 60 cm, avec raccord





Verlegebeispiel

Verlegung ohne Versatz, zufällig
Kombination aus 15010-A01,15012-A01,
15014-A01 und 15015-A01, 15015-A02

Installation example

Installation without pattern mismatch, random
Combination of 15010-A01,15012-A01,
15014-A01 and 15015-A01, 15015-A02

Exemple pour la pose

Pose sans déport, aléatoire
Dessins 15010-A01,15012-A01, 15014-A01
en combinaison avec dessins 15015-A01,
15015-A02



FRAGMENTS

60

60er Fliesen, rapportgenau
60 x 60 tiles, critical cut
Dalles 60 x 60 cm, avec raccord



Verlegebeispiel

Verlegung ohne Versatz, zufällig
Kombination aus
15016-A01 und 15017-A01

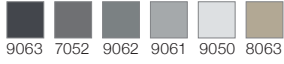
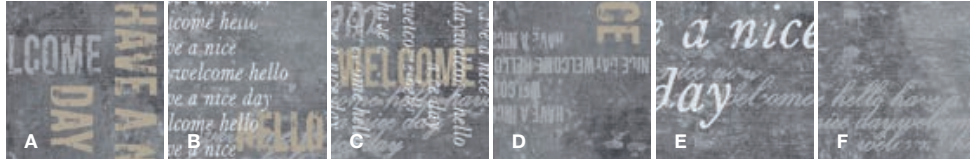
Installation example

Installation without pattern
mismatch, randomly
Combination of
15016-A01 and 15017-A01

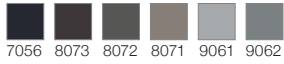
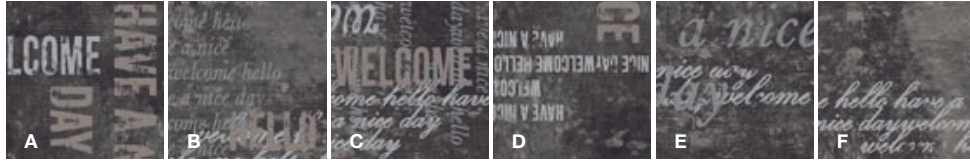
Exemple pour la pose

Pose sans déport, aléatoire
Dessin 15016-A01 en combinaison
avec dessin 15017-A01

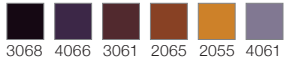
15016-A01



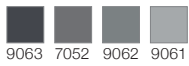
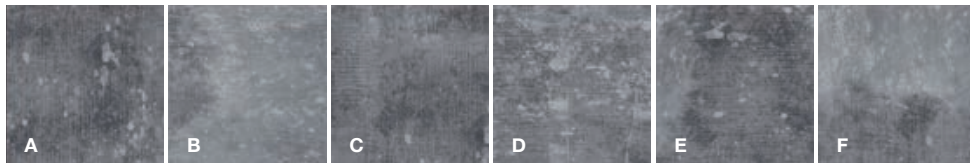
15016-A02



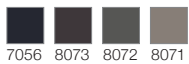
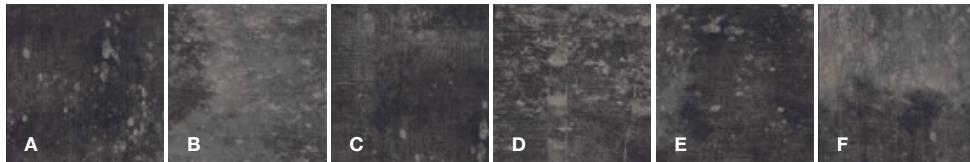
15016-A03



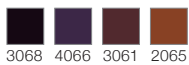
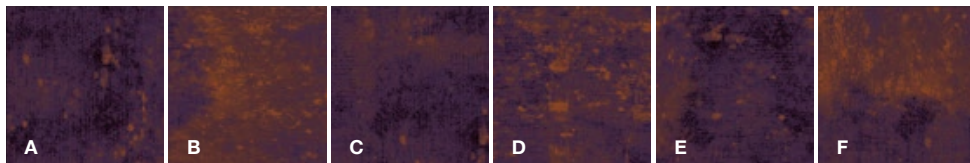
15017-A01



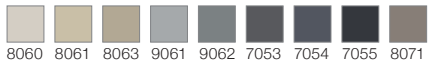
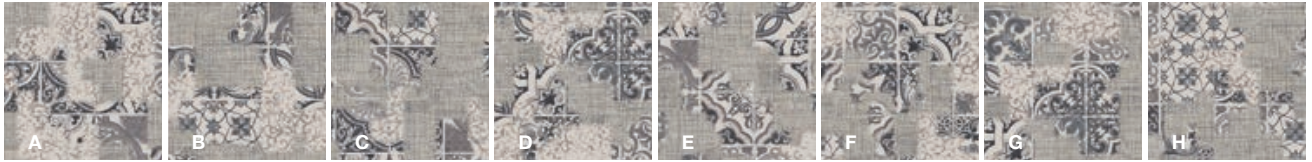
15017-A02



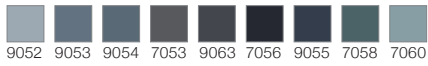
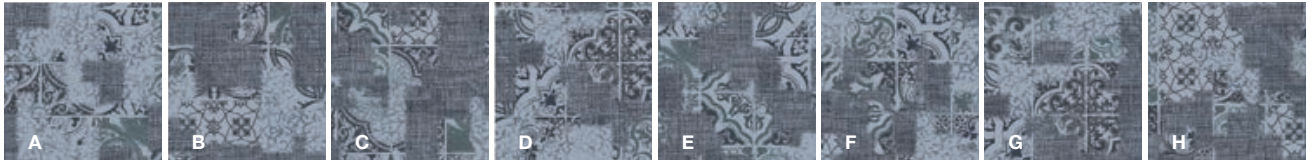
15017-A03



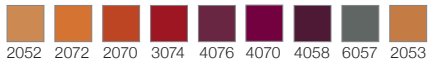
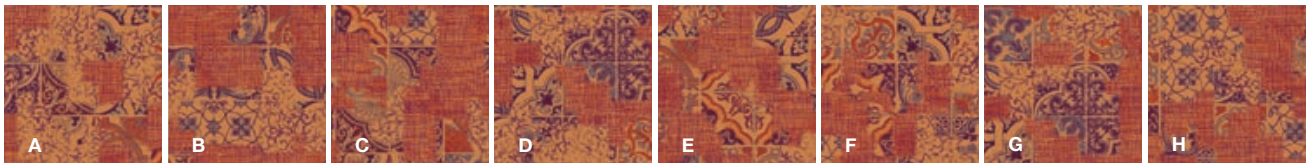
15008-A01



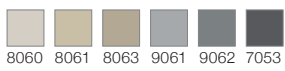
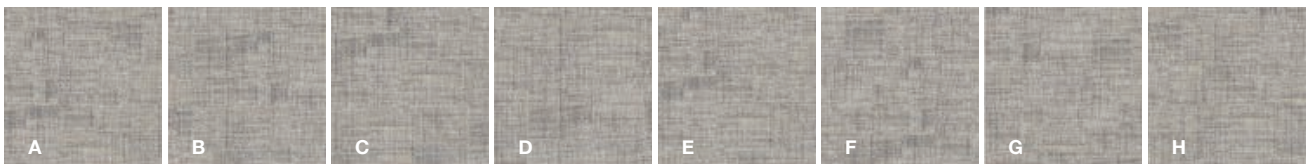
15008-A02



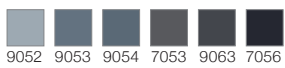
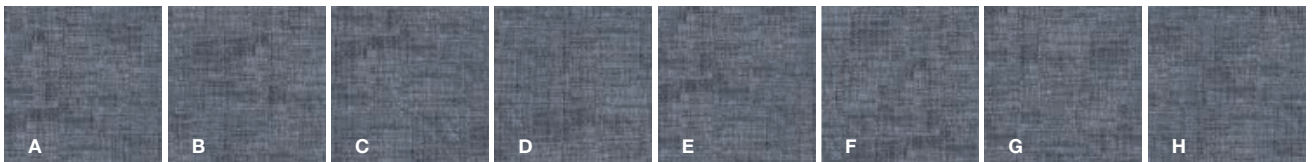
15008-A03



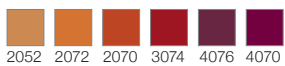
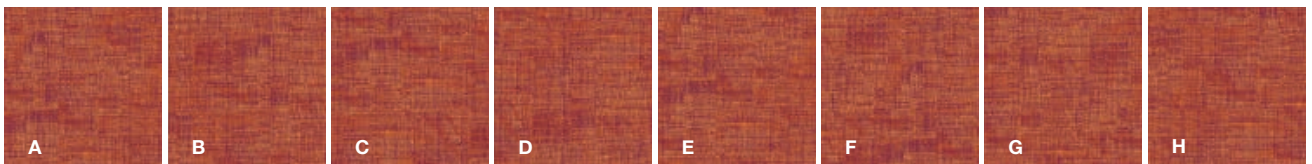
15009-A01



15009-A02



15009-A03



FRAGMENTS

48

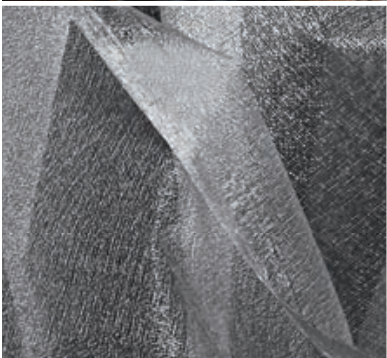
48er Fliesen, rapportgenau
48 x 48 tiles, critical cut
Dalles 48 x 48 cm, avec raccord



Verlegebeispiel · Verlegung ohne Versatz, zufällig
Kombination aus 15008-A01 und 15009-A01

Installation example · Installation without pattern mismatch, randomly
Combination of 15008-A01 and 15009-A01

Exemple pour la pose · Pose sans déport, aléatoire
Dessin 15008-A01 en combinaison avec dessin 15009-A01





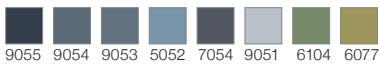
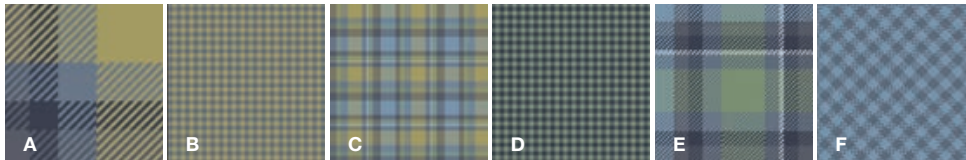


TEXTILE

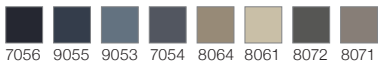
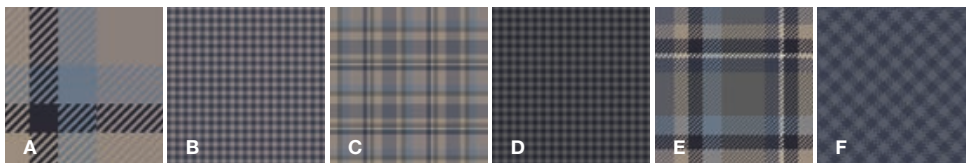
60er Fliesen, rapportgenau
60 x 60 tiles, critical cut
Dalles 60 x 60 cm, avec raccord

60

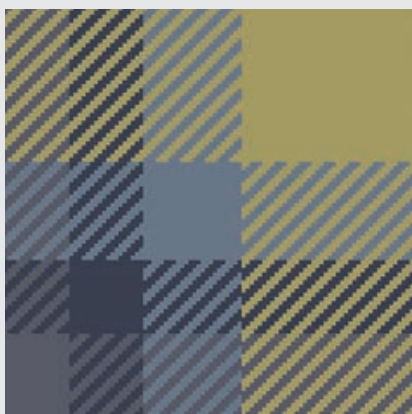
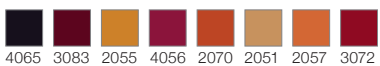
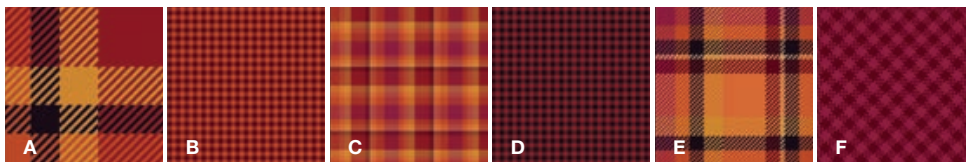
15052-A01



15052-A02



15052-A03



Verlegebeispiel

Verlegung ohne Versatz, zufällig
15052-A01

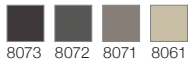
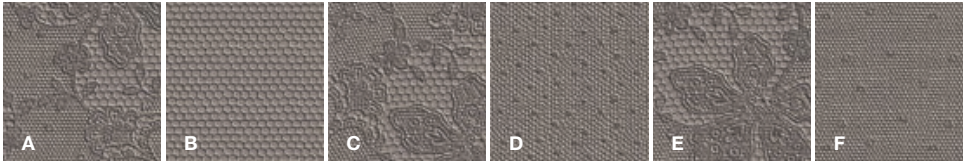
Installation example

Installation without pattern mismatch, randomly
15052-A01

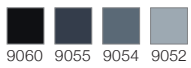
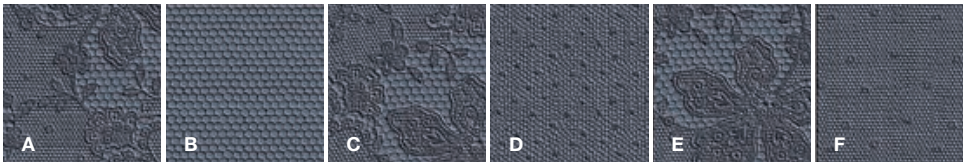
Exemple pour la pose

Pose sans déport, aléatoire
15052-A01

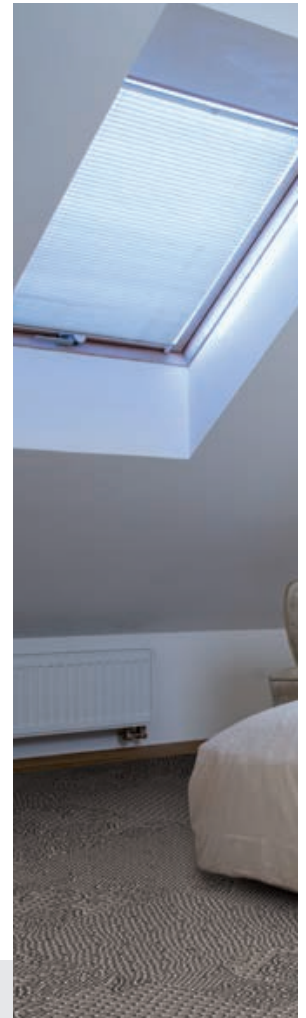
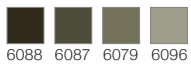
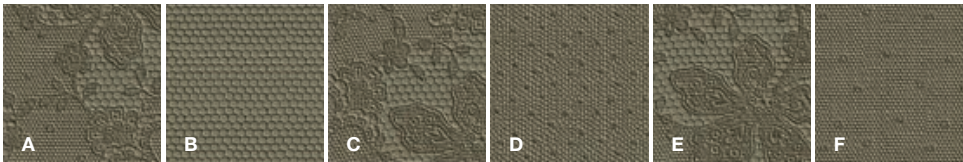
15060-A01



15060-A02



15060-A03



Verlegebeispiel

Verlegung ohne Versatz, regelmäßig
15060-A01

Installation example

Installation without pattern mismatch, regularly
15060-A01

Exemple pour la pose

Pose sans déport, régulièrement
15060-A01



TEXTILE

60er Fliesen, rapportgenau
60 x 60 tiles, critical cut
Dalles 60 x 60 cm, avec raccord

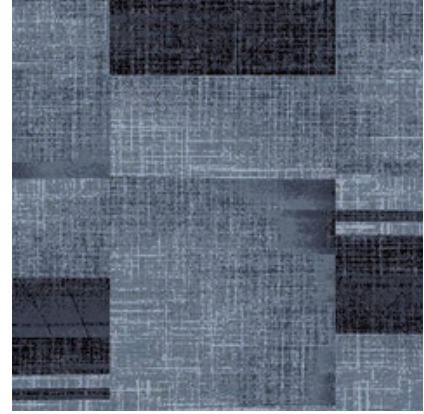
60



TEXTILE

60

60er Fliesen, rapportgenau
60 x 60 tiles, critical cut
Dalles 60 x 60 cm, avec raccord



Verlegebeispiel

Verlegung ohne Versatz, zufällig
Kombination aus 15058-A01 und 15059-A01

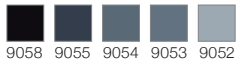
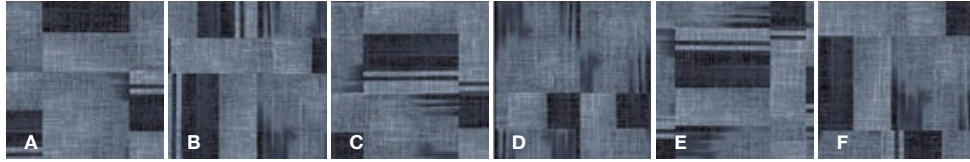
Installation example

Installation without pattern mismatch, randomly
Combination of 15058-A01 and 15059-A01

Exemple pour la pose

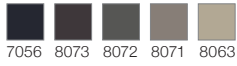
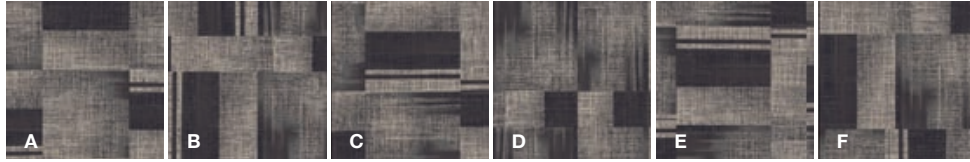
Pose sans déport, aléatoire
Dessin 15058-A01 en combinaison
avec dessin 15059-A01

15058-A01



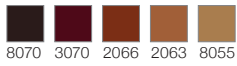
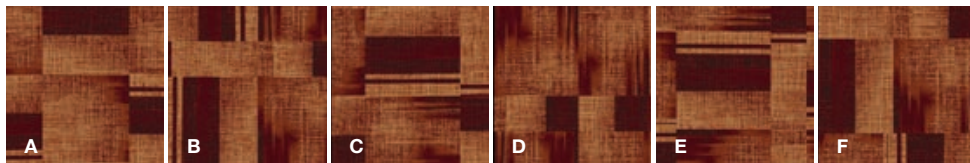
9058 9055 9054 9053 9052

15058-A02



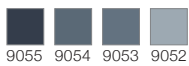
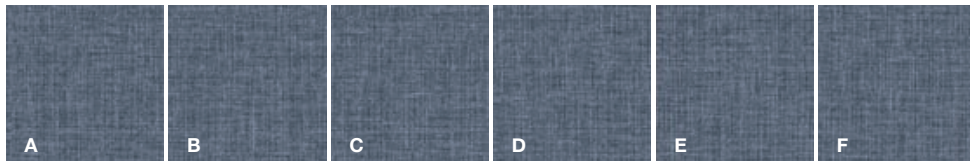
7056 8073 8072 8071 8063

15058-A03



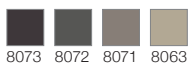
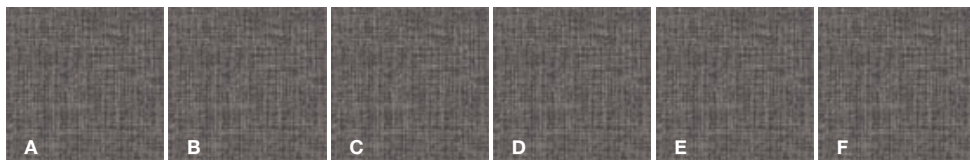
8070 3070 2066 2063 8055

15059-A01



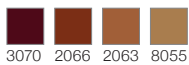
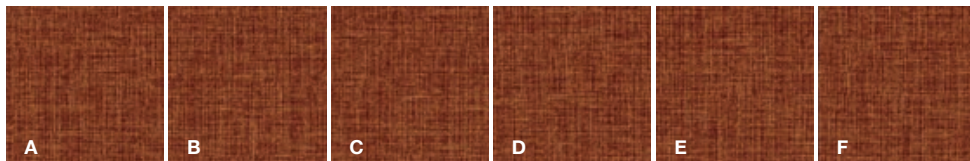
9055 9054 9053 9052

15059-A02



8073 8072 8071 8063

15059-A03

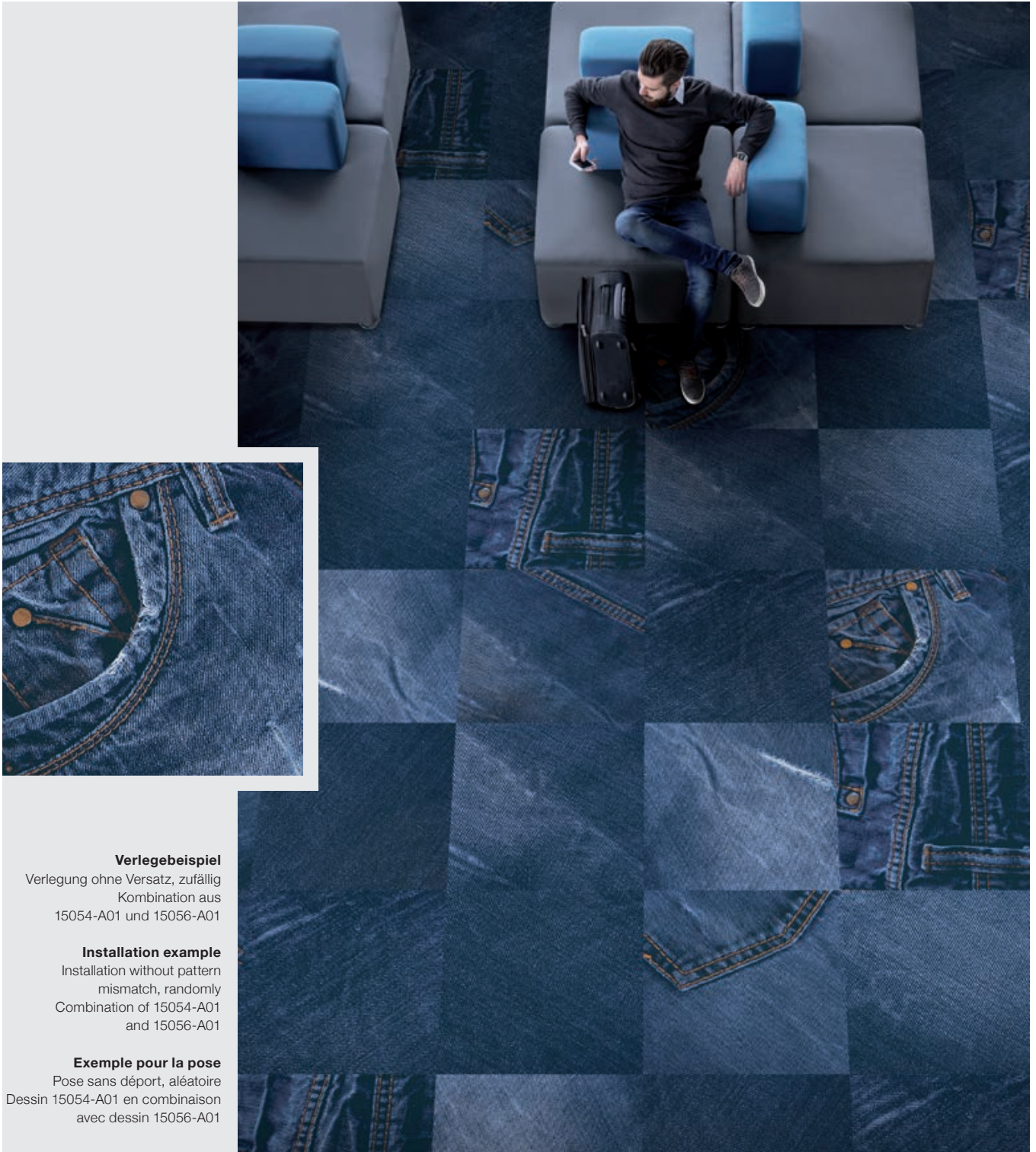


3070 2066 2063 8055

TEXTILE

60er Fliesen, rapportgenau
60 x 60 tiles, critical cut
Dalles 60 x 60 cm, avec raccord

60



Verlegebeispiel

Verlegung ohne Versatz, zufällig
Kombination aus
15054-A01 und 15056-A01

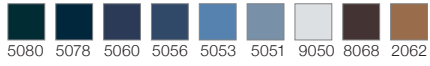
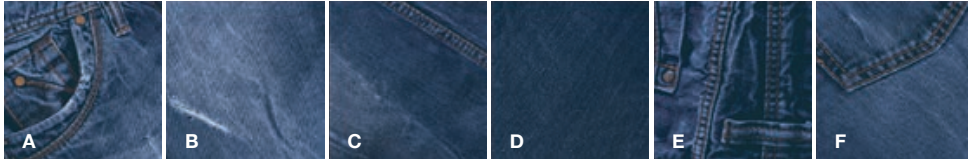
Installation example

Installation without pattern
mismatch, randomly
Combination of 15054-A01
and 15056-A01

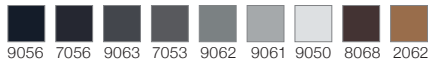
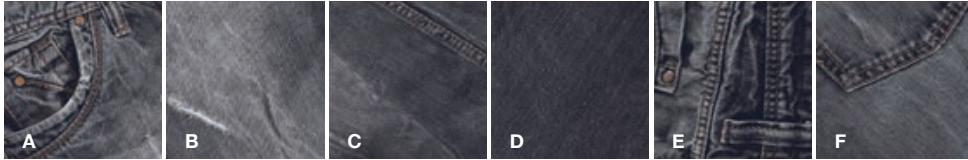
Exemple pour la pose

Pose sans déport, aléatoire
Dessin 15054-A01 en combinaison
avec dessin 15056-A01

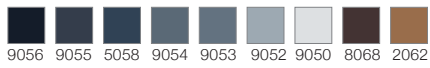
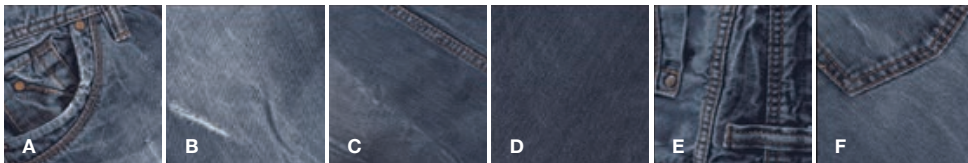
15054-A01



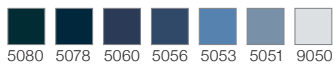
15054-A02



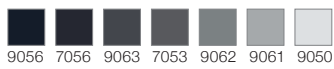
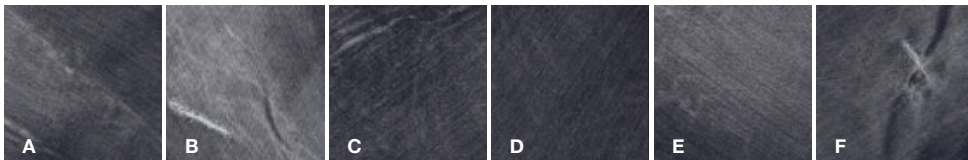
15054-A03



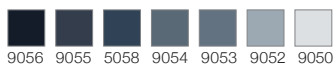
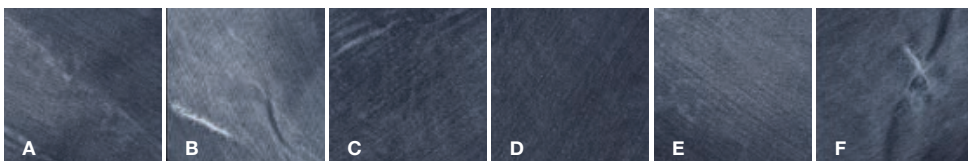
15056-A01



15056-A02



15056-A03

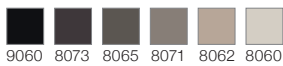
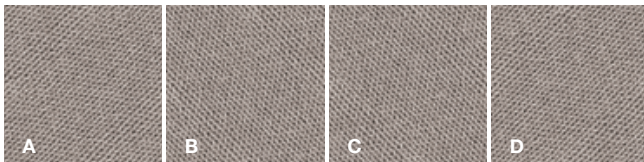


TEXTILE

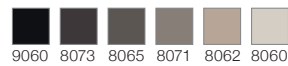
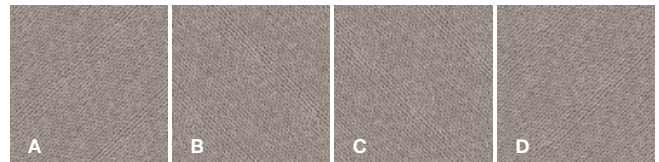
96er Fliesen, rapportgenau
96 x 96 tiles, critical cut
Dalles 96 x 96 cm, avec raccord

96

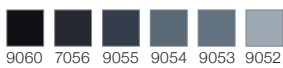
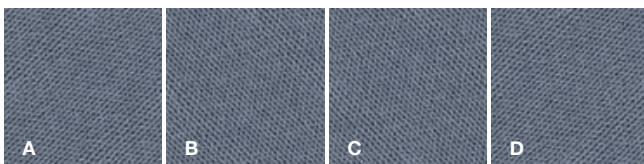
15046-A01



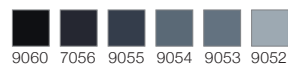
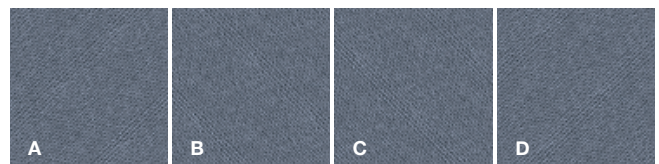
15048-A01



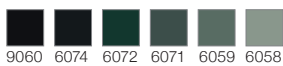
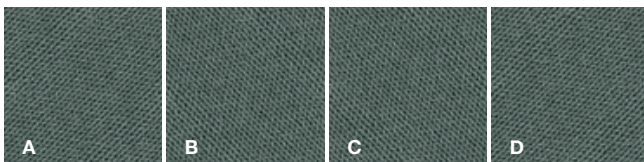
15046-A02



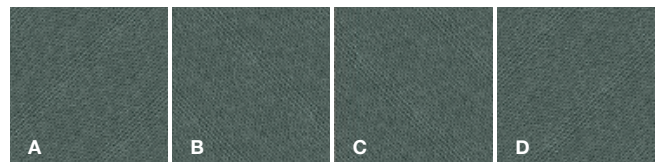
15048-A02



15046-A03



15048-A03



Verlegebeispiel

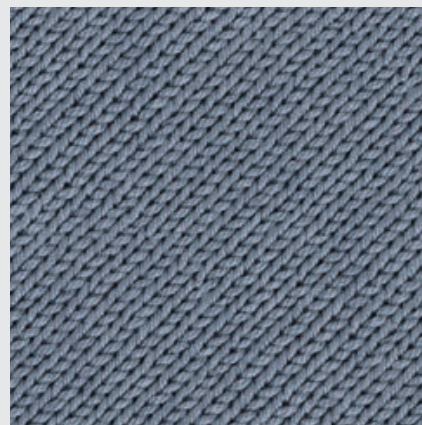
Verlegung ohne Versatz, regelmäßig
15046-A02

Installation example

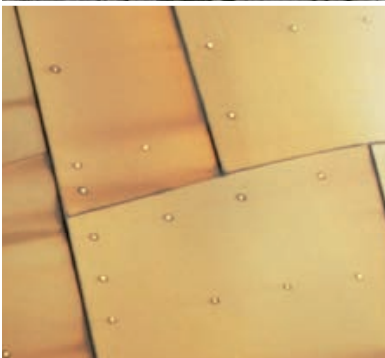
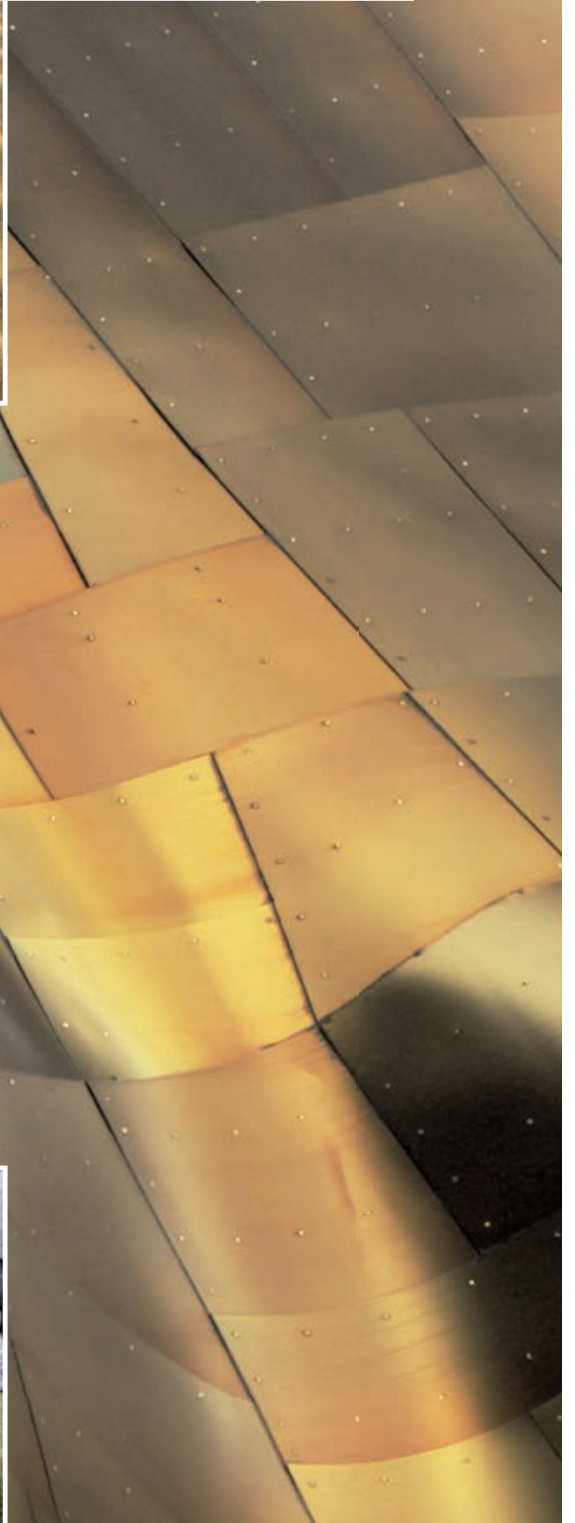
Installation without pattern mismatch, regularly
15046-A02

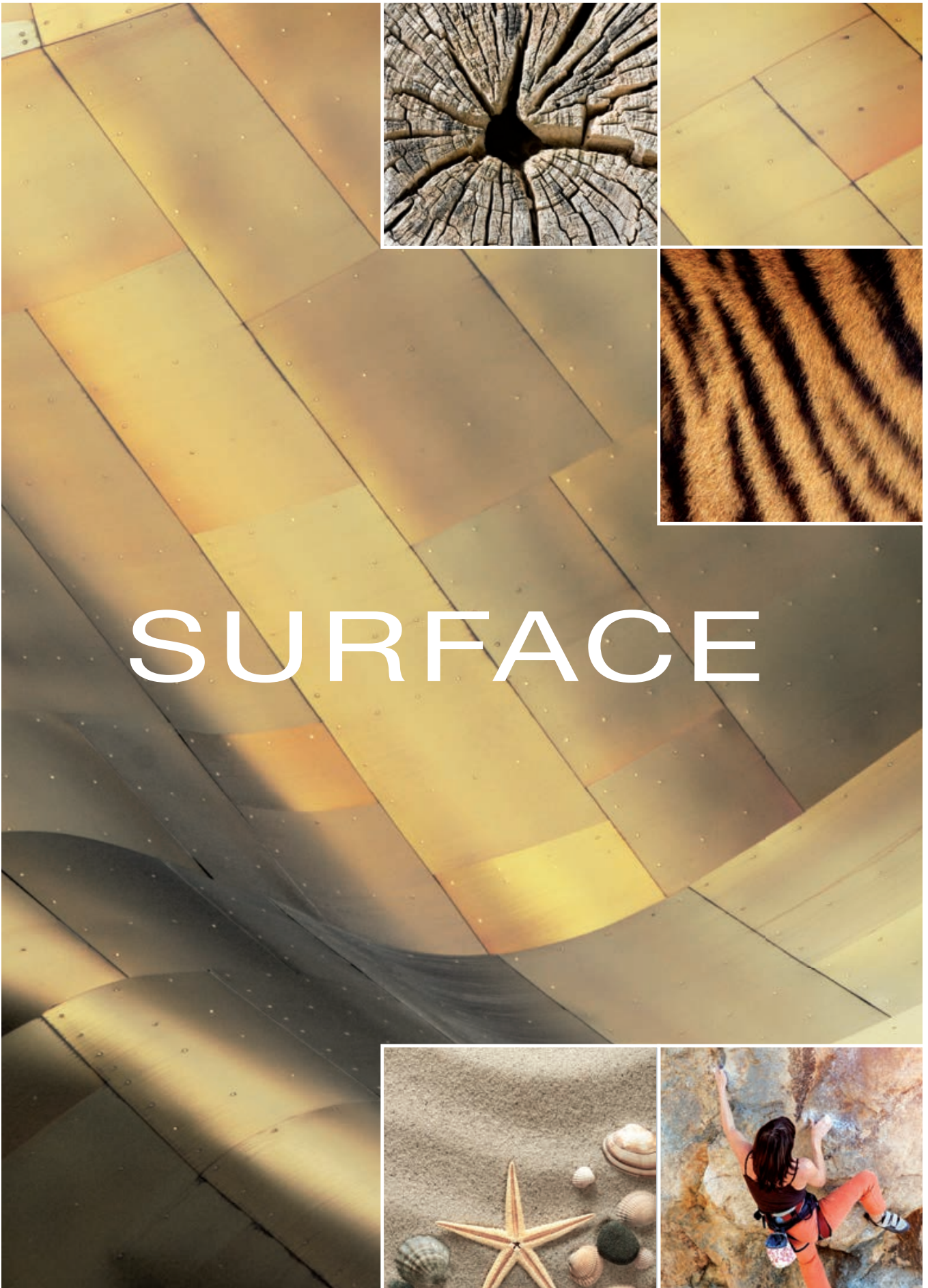
Exemple pour la pose

Pose sans déport, régulièrement
15046-A02

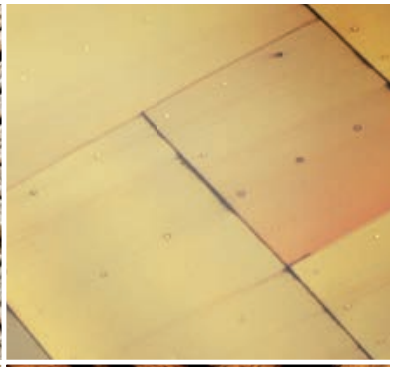








SURFACE



SURFACE

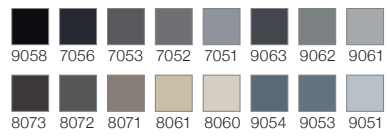
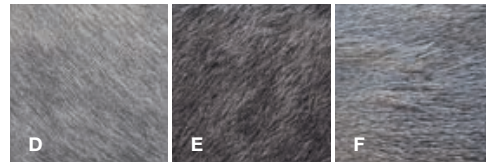
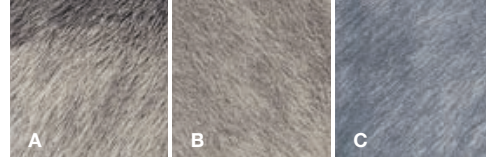
60er Fliesen, rapportgenau
60 x 60 tiles, critical cut
Dalles 60 x 60 cm, avec raccord

60





15044-A01



Verlegebeispiel

Verlegung ohne Versatz, zufällig
15044-A01

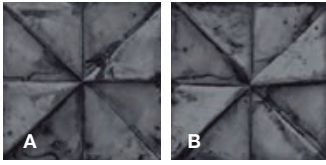
Installation example

Installation without pattern mismatch, randomly
15044-A01

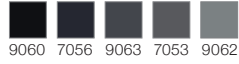
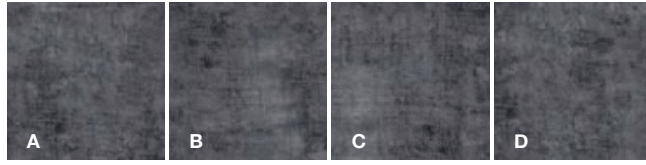
Exemple pour la pose

Pose sans déport, aléatoire
15044-A01

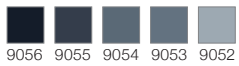
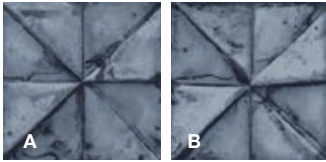
15040-A01



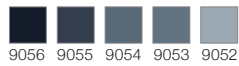
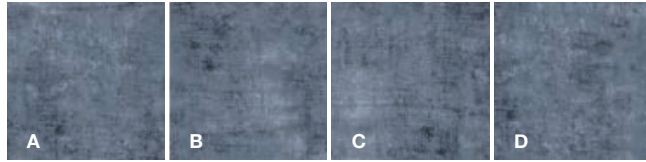
15041-A01



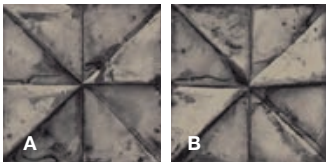
15040-A02



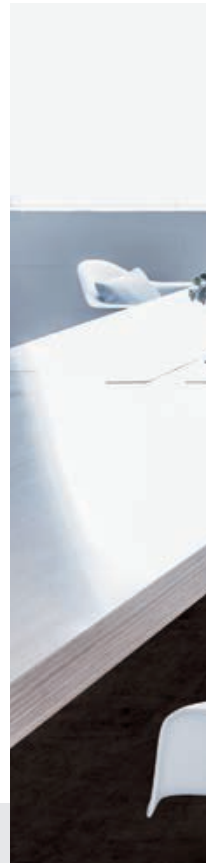
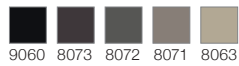
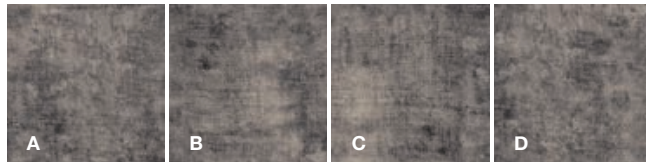
15041-A02



15040-A03



15041-A03



Verlegebeispiel

Verlegung ohne Versatz, regelmäßig
Kombination aus
15040-A01 und 15041-A01

Installation example

Installation without pattern mismatch, regularly
Combination of
15040-A01 and 15041-A01

Exemple pour la pose

Pose sans déport, régulièrement
Dessin 15040-A01 en combinaison
avec dessin 15041-A01



SURFACE

48er Fliesen, rapportgenau
48 x 48 tiles, critical cut
Dalles 48 x 48 cm, avec raccord

48

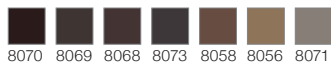


SURFACE

60er Fliesen, rapportgenau
60 x 60 tiles, critical cut
Dalles 60 x 60 cm, avec raccord

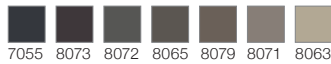
60

15034-A01



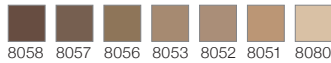
8070 8069 8068 8073 8058 8056 8071

15034-A02



7055 8073 8072 8065 8079 8071 8063

15034-A03



8058 8057 8056 8053 8052 8051 8080

Verlegebeispiel

Verlegung ohne Versatz, zufällig
15034-A01

Installation example

Installation without pattern mismatch, randomly
15034-A01

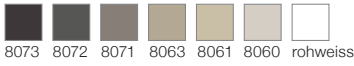
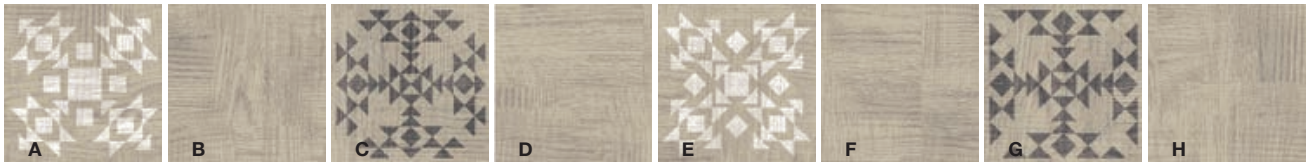
Exemple pour la pose

Pose sans déport, aléatoire
15034-A01

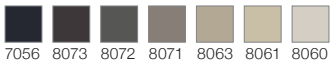
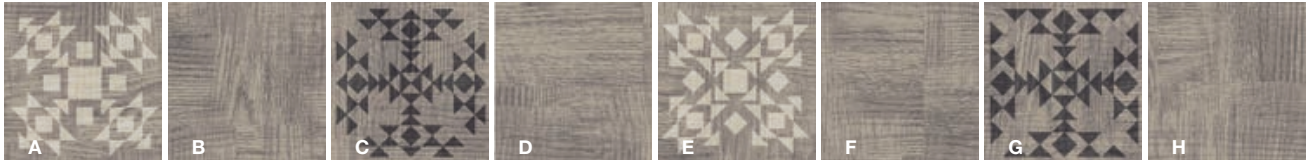




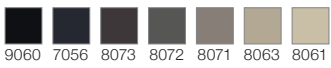
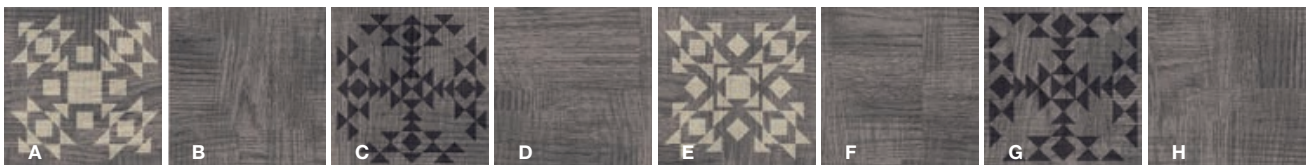
15038-A01



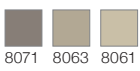
15038-A02



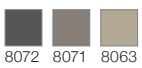
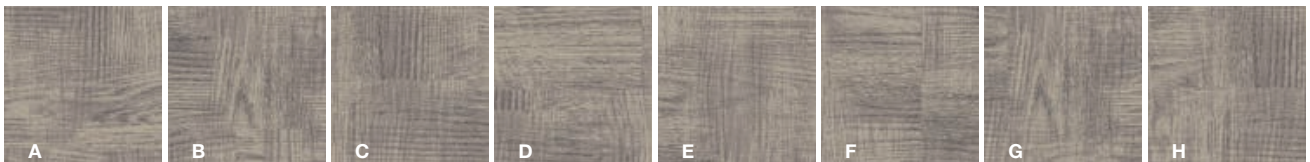
15038-A03



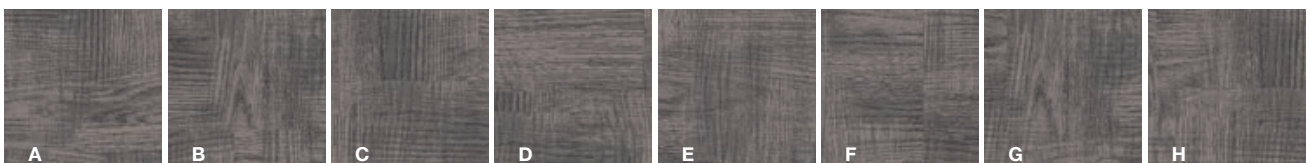
15039-A01



15039-A02



15039-A03



SURFACE

48er Fliesen, rapportgenau
48 x 48 tiles, critical cut
Dalles 48 x 48 cm, avec raccord

48



Verlegebeispiel · Verlegung ohne Versatz, zufällig
Kombination aus 15038-A02 und 15039-A02

Installation example · Installation without pattern mismatch, randomly
Combination of 15038-A02 and 15039-A02

Exemple pour la pose · Pose sans déport, aléatoire
Dessin 15038-A02 en combinaison avec dessin 15039-A02



SURFACE

48er Fliesen, rapportgenau
48 x 48 tiles, critical cut
Dalles 48 x 48 cm, avec raccord

48





Verlegebeispiel

Verlegung ohne Versatz, zufällig
Kombination aus 15038-A01, 15038-A02,
15038-A03 und 15039-A03

Installation example

Installation without pattern mismatch, random
Combination of 15038-A01, 15038-A02,
15038-A03 and 15039-A03

Exemple pour la pose

Pose sans déport, aléatoire
Dessins 15038-A01, 15038-A02,
15038-A03 en combinaison
avec dessin 15039-A03



SURFACE

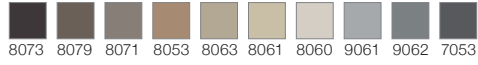
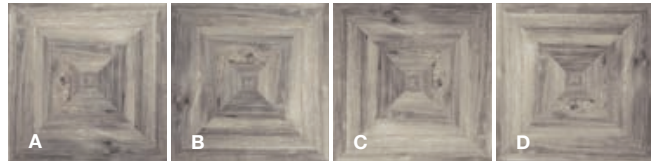
96er Fliesen, rapportgenau
96 x 96 tiles, critical cut
Dalles 96 x 96 cm, avec raccord

96



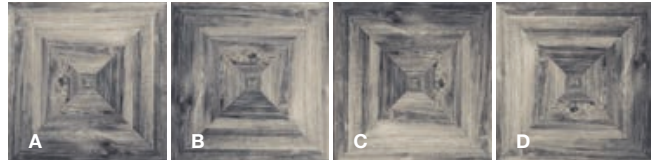


15036-A01



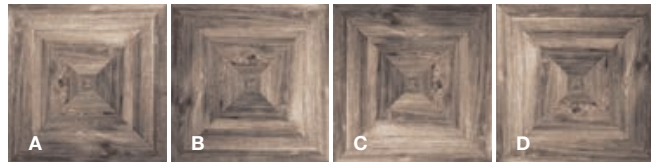
8073 8079 8071 8053 8063 8061 8060 9061 9062 7053

15036-A02



7056 7055 7053 8071 8063 8061 8060 9061 9062 9063

15036-A03



8069 8068 8079 8057 8052 8080 8060 8064 8071 8072

Verlegebeispiel

Verlegung ohne Versatz, zufällig
15036-A01

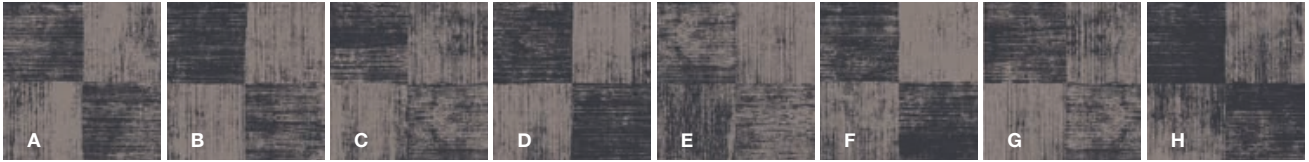
Installation example

Installation without pattern mismatch, randomly
15036-A01

Exemple pour la pose

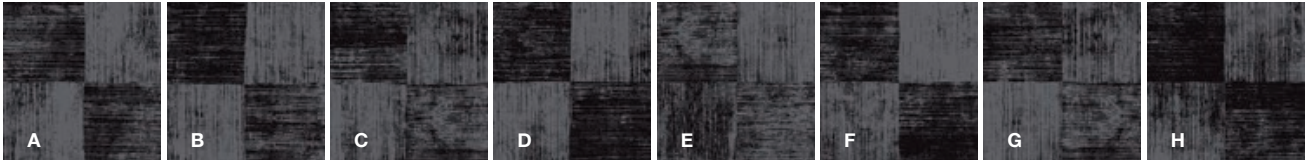
Pose sans déport, aléatoire
15036-A01

15042-A01



7055 8071

15042-A02



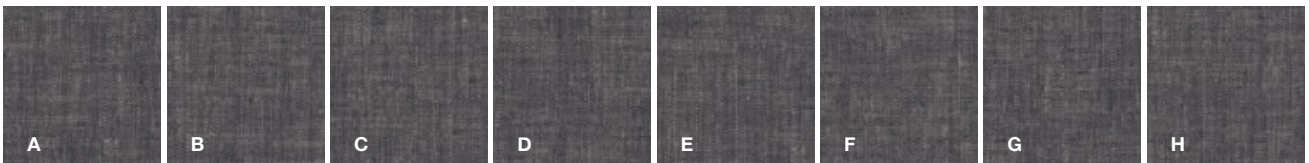
9060 7053

15042-A03



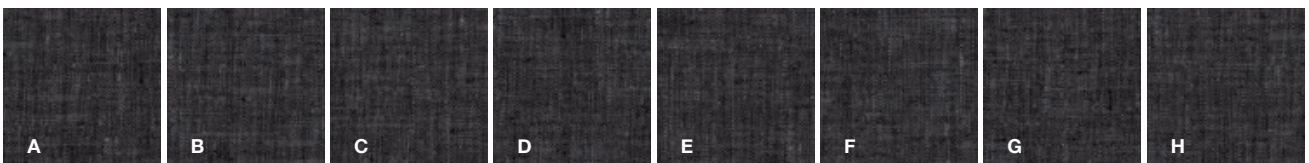
9060 3071

15043-A01



7055 8071

15043-A02



9060 7053

15043-A03

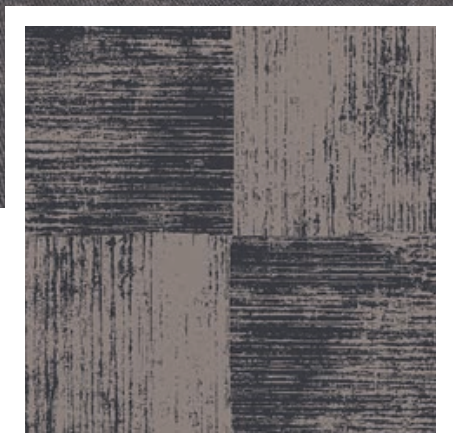


9060 3071

SURFACE

48er Fliesen, rapportgenau
48 x 48 tiles, critical cut
Dalles 48 x 48 cm, avec raccord

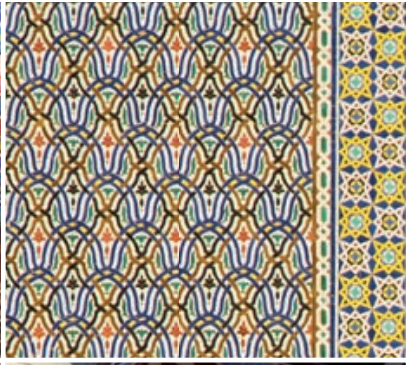
48



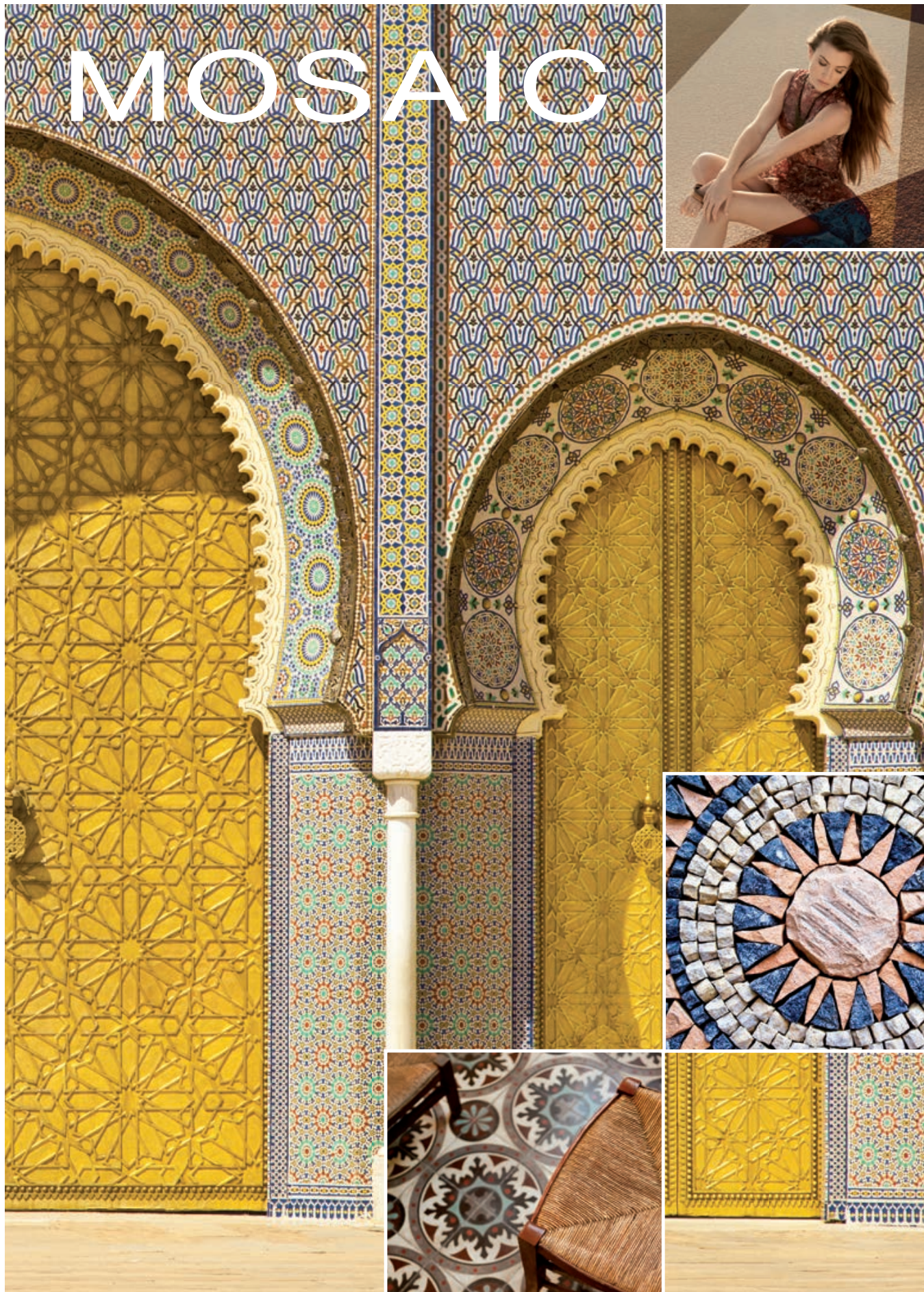
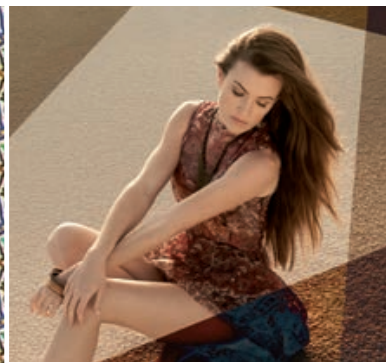
Verlegebeispiel · Verlegung ohne Versatz, zufällig
Kombination aus 15042-A01 und 15043-A01

Installation example · Installation without pattern mismatch, randomly
Combination of 15042-A01 and 15043-A01

Exemple pour la pose · Pose sans déport, aléatoire
Dessin 15042-A01 en combinaison avec dessin 15043-A01



MOSAIC



MOSAIC

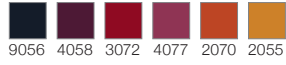
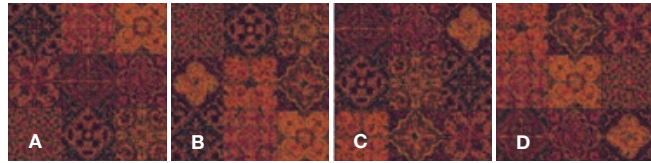
96er Fliesen, rapportgenau
96 x 96 tiles, critical cut
Dalles 96 x 96 cm, avec raccord

96



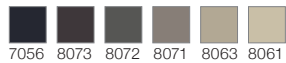
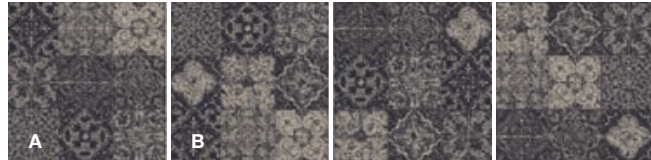


15022-A01



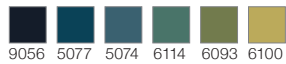
9056 4058 3072 4077 2070 2055

15022-A02



7056 8073 8072 8071 8063 8061

15022-A03



9056 5077 5074 6114 6093 6100

Verlegebeispiel

Verlegung ohne Versatz, zufällig
15022-A01

Installation example

Installation without pattern mismatch, randomly
15022-A01

Exemple pour la pose

Pose sans déport, aléatoire
15022-A01

MOSAIC

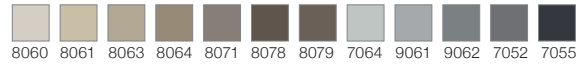
96er Fliesen, rapportgenau
96 x 96 tiles, critical cut
Dalles 96 x 96 cm, avec raccord

96

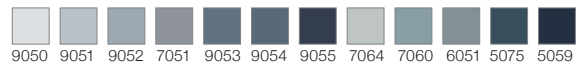
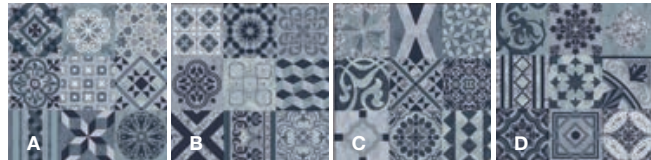




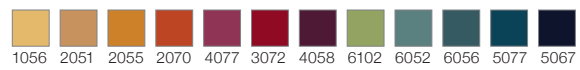
15061-A01



15061-A02



15061-A03



Verlegebeispiel

Verlegung ohne Versatz, zufällig
15061-A01

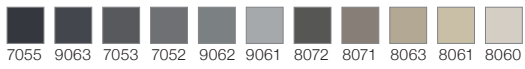
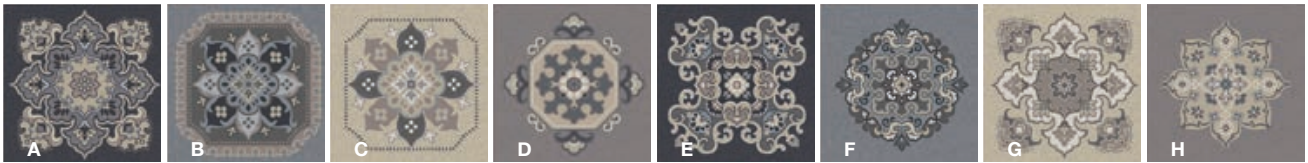
Installation example

Installation without pattern mismatch, randomly
15061-A01

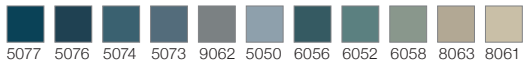
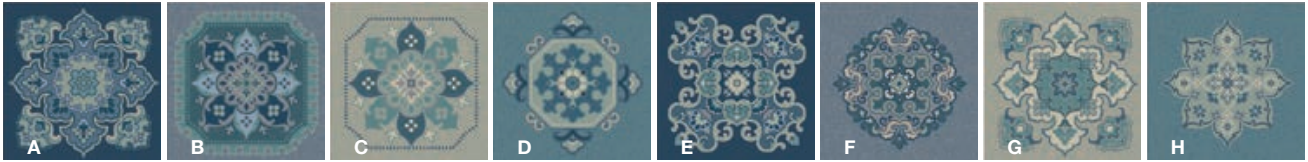
Exemple pour la pose

Pose sans déport, aléatoire
15061-A01

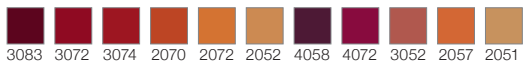
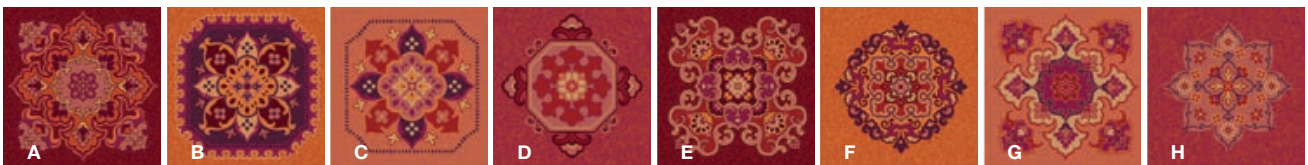
15020-A01



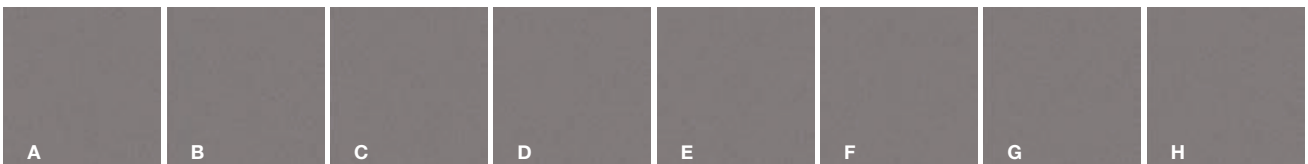
15020-A02



15020-A03



15021-A01



15021-A02



15021-A03



MOSAIC

48

48er Fliesen, rapportgenau
48 x 48 tiles, critical cut
Dalles 48 x 48 cm, avec raccord



Verlegebeispiel

Verlegung ohne Versatz, zufällig
Kombination aus
15020-A01 und 15021-A01

Installation example

Installation without pattern mismatch,
randomly
Combination of
15020-A01 and 15021-A01

Exemple pour la pose

Pose sans déport, aléatoire
Dessin 15020-A01 en combinaison
avec dessin 15021-A01

Diese Fliesen sind nur als Sets erhältlich. Die Abbildung zeigt jeweils eine beispielhafte Fliese aus jedem Set.

Tiles are only available as sets. The image shows respectively one sample from each set.

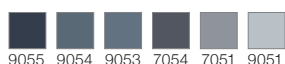
Les dalles seront seulement disponible dans un set. L'image montre respectivement une exemple de chaque set.

ETHNO

15004-A01



48er Fliesen, rapportgenau
48 x 48 tiles critical cut
Dalles 48 x 48 cm, avec raccord

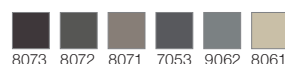


9055 9054 9053 7054 7051 9051

15004-A02



48er Fliesen, rapportgenau
48 x 48 tiles critical cut
Dalles 48 x 48 cm, avec raccord



8073 8072 8071 7053 9062 8061

15004-A03



48er Fliesen, rapportgenau
48 x 48 tiles critical cut
Dalles 48 x 48 cm, avec raccord



4058 3072 2070 4072 2057 2052

Verlegung

Anordnung der Fliesen zufällig,
auch im Versatz möglich

Laying

Pattern layout randomly,
also as half drop / half brick possible

Pose

L'ordre des dalles fortuit – il sera aussi
possible de poser en quinconce

15005-A01



48er Fliesen, rapportgenau
48 x 48 tiles critical cut
Dalles 48 x 48 cm, avec raccord

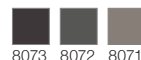


9055 9054 9053

15005-A02

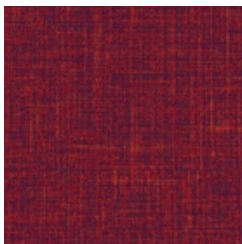


48er Fliesen, rapportgenau
48 x 48 tiles critical cut
Dalles 48 x 48 cm, avec raccord



8073 8072 8071

15005-A03



48er Fliesen, rapportgenau
48 x 48 tiles critical cut
Dalles 48 x 48 cm, avec raccord



4058 3072 2070

Verlegung

Anordnung der Fliesen zufällig,
auch im Versatz möglich

Laying

Pattern layout randomly,
also as half drop / half brick possible

Pose

L'ordre des dalles fortuit – il sera aussi
possible de poser en quinconce

Bitte beachten Sie, dass die in dieser Kollektion dargestellten Farben nur annähernd den tatsächlichen Teppichbodenfarben entsprechen. Verwenden Sie bitte unsere original Farbmuster.

Achtung: aus technischen Gründen ist ein Verspringen des Dessins von Fliese zu Fliese um ca. +/- 5mm nicht auszuschließen. Dies wird als Reklamationsgrund nicht anerkannt und ist ggf. vom Verleger auszugleichen.

Please note that colours in this printed brochure are approximate. For correct colours please refer to our colour samples.

Attention: For technical reasons we cannot completely exclude that the design skips from tile to tile by approx +/- 5 mm. This is not accepted as a reason for a claim and possibly has to be cleared by the layer.

Veuillez noter que les couleurs représentées dans cette collection sont approximatives par rapport aux couleurs réelles. S'il vous plaît utiliser notre nuancier original.

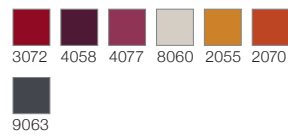
Attention: Pour des raisons techniques un pose en quinconce de dessin de dalle à dalle doit être toléré autour de +/- 5 mm. Ca ne représente pas un motif de réclamation et doit être corrigé éventuellement par le poseur.

ETHNO

15006-A01



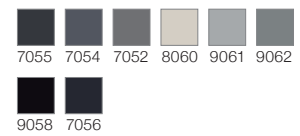
60er Fliesen, rapportgenau
60 x 60 tiles critical cut
Dalles 60 x 60 cm, avec raccord



15006-A02



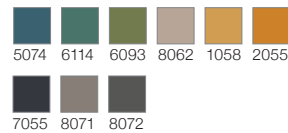
60er Fliesen, rapportgenau
60 x 60 tiles critical cut
Dalles 60 x 60 cm, avec raccord



15006-A03



60er Fliesen, rapportgenau
60 x 60 tiles critical cut
Dalles 60 x 60 cm, avec raccord



Verlegung

Anordnung der Fliesen zufällig,
auch im Versatz möglich

Laying

Pattern layout randomly,
also as half drop / half brick possible

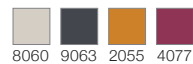
Pose

L'ordre des dalles fortuit – il sera aussi
possible de poser en quinconce

15007-A01



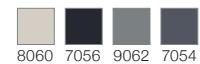
60er Fliesen, rapportgenau
60 x 60 tiles critical cut
Dalles 60 x 60 cm, avec raccord



15007-A02



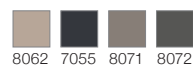
60er Fliesen, rapportgenau
60 x 60 tiles critical cut
Dalles 60 x 60 cm, avec raccord



15007-A03



60er Fliesen, rapportgenau
60 x 60 tiles critical cut
Dalles 60 x 60 cm, avec raccord



Verlegung

Anordnung der Fliesen zufällig,
auch im Versatz möglich

Laying

Pattern layout randomly,
also as half drop / half brick possible

Pose

L'ordre des dalles fortuit – il sera aussi
possible de poser en quinconce

Diese Fliesen sind nur als Sets erhältlich. Die Abbildung zeigt jeweils eine beispielhafte Fliese aus jedem Set.

Tiles are only available as sets. The image shows respectively one sample from each set.

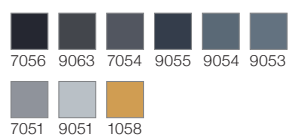
Les dalles seront seulement disponible dans un set. L'image montre respectivement une exemple de chaque set.

ETHNO

15002-A01



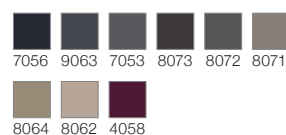
60er Fliesen, rapportgenau
60 x 60 tiles critical cut
Dalles 60 x 60 cm, avec raccord



15002-A02



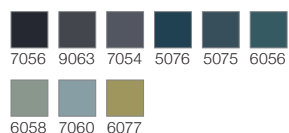
60er Fliesen, rapportgenau
60 x 60 tiles critical cut
Dalles 60 x 60 cm, avec raccord



15002-A03



60er Fliesen, rapportgenau
60 x 60 tiles critical cut
Dalles 60 x 60 cm, avec raccord



Verlegung

Anordnung der Fliesen zufällig,
auch im Versatz möglich

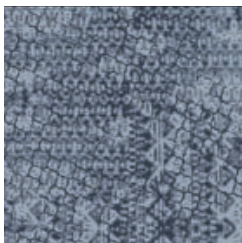
Laying

Pattern layout randomly,
also as half drop / half brick possible

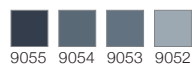
Pose

L'ordre des dalles fortuit – il sera aussi
possible de poser en quinconce

15000-A01



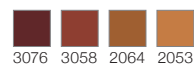
60er Fliesen, rapportgenau
60 x 60 tiles critical cut
Dalles 60 x 60 cm, avec raccord



15000-A02



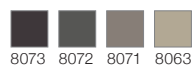
60er Fliesen, rapportgenau
60 x 60 tiles critical cut
Dalles 60 x 60 cm, avec raccord



15000-A03



60er Fliesen, rapportgenau
60 x 60 tiles critical cut
Dalles 60 x 60 cm, avec raccord



Verlegung

Anordnung der Fliesen zufällig,
auch im Versatz möglich

Laying

Pattern layout randomly,
also as half drop / half brick possible

Pose

L'ordre des dalles fortuit – il sera aussi
possible de poser en quinconce

Bitte beachten Sie, dass die in dieser Kollektion dargestellten Farben nur annähernd den tatsächlichen Teppichbodenfarben entsprechen. Verwenden Sie bitte unsere original Farbmuster.

Please note that colours in this printed brochure are approximate. For correct colours please refer to our colour samples.

Veillez noter que les couleurs représentées dans cette collection sont approximatives par rapport aux couleurs réelles. S'il vous plaît utiliser notre nuancier original.

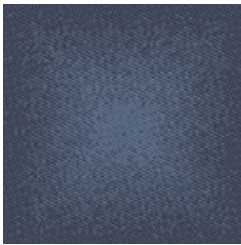
Achtung: aus technischen Gründen ist ein Verspringen des Dessins von Fliese zu Fliese um ca. +/- 5mm nicht auszuschließen. Dies wird als Reklamationsgrund nicht anerkannt und ist ggf. vom Verleger auszugleichen.

Attention: For technical reasons we cannot completely exclude that the design skips from tile to tile by approx +/- 5 mm. This is not accepted as a reason for a claim and possibly has to be cleared by the layer.

Attention: Pour des raisons techniques un pose en quinconce de dessin de dalle à dalle doit être toléré autour de +/- 5 mm. Ca ne représente pas un motif de réclamation et doit être corrigé éventuellement par le poseur.

RETRO

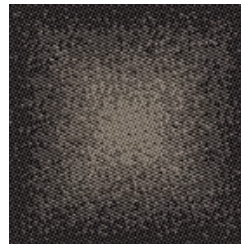
15030-A01



48er Fliesen, rapportgenau
48 x 48 tiles critical cut
Dalles 48 x 48 cm, avec raccord



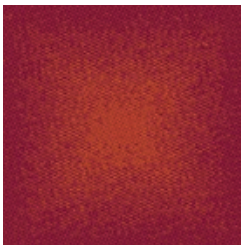
15030-A02



48er Fliesen, rapportgenau
48 x 48 tiles critical cut
Dalles 48 x 48 cm, avec raccord



15030-A03



48er Fliesen, rapportgenau
48 x 48 tiles critical cut
Dalles 48 x 48 cm, avec raccord



A	B	A	B	A	B	A	B
B	A	B	A	B	A	B	A
A	B	A	B	A	B	A	B
B	A	B	A	B	A	B	A
A	B	A	B	A	B	A	B
B	A	B	A	B	A	B	A
A	B	A	B	A	B	A	B
B	A	B	A	B	A	B	A

Verlegung
Anordnung der Fliesen regelmäßig

Laying
Pattern layout regularly

Pose
L'ordre des dalles régulièrement

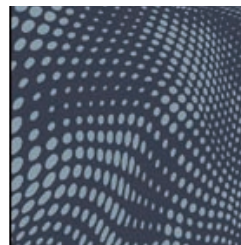
15026-A01



60er Fliesen, rapportgenau
60 x 60 tiles critical cut
Dalles 60 x 60 cm, avec raccord



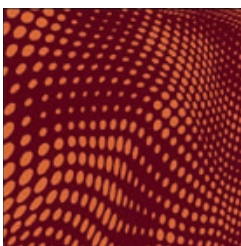
15026-A02



60er Fliesen, rapportgenau
60 x 60 tiles critical cut
Dalles 60 x 60 cm, avec raccord



15026-A03



60er Fliesen, rapportgenau
60 x 60 tiles critical cut
Dalles 60 x 60 cm, avec raccord



Verlegung
Anordnung der Fliesen zufällig,
auch im Versatz möglich

Laying
Pattern layout randomly,
also as half drop / half brick possible

Pose
L'ordre des dalles fortuit – il sera aussi
possible de poser en quinconce

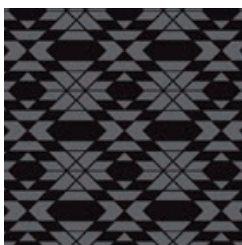
Diese Fliesen sind nur als Sets erhältlich. Die Abbildung zeigt jeweils eine beispielhafte Fliese aus jedem Set.

Tiles are only available as sets. The image shows respectively one sample from each set.

Les dalles seront seulement disponible dans un set. L'image montre respectivement une exemple de chaque set.

RETRO

15032-A01

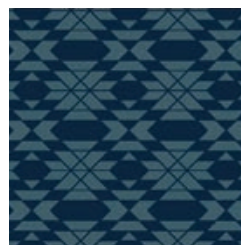


60er Fliesen, rapportgenau
60 x 60 tiles critical cut
Dalles 60 x 60 cm, avec raccord



9060 7053

15032-A02

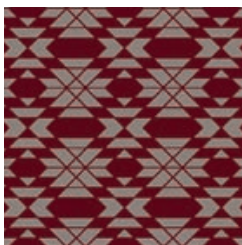


60er Fliesen, rapportgenau
60 x 60 tiles critical cut
Dalles 60 x 60 cm, avec raccord



5078 6056

15032-A03



60er Fliesen, rapportgenau
60 x 60 tiles critical cut
Dalles 60 x 60 cm, avec raccord



3083 8071

Verlegung

Anordnung der Fliesen zufällig,
auch im Versatz möglich

Laying

Pattern layout randomly,
also as half drop / half brick possible

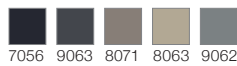
Pose

L'ordre des dalles fortuit – il sera aussi
possible de poser en quinconce

15028-A01



60er Fliesen, rapportgenau
60 x 60 tiles critical cut
Dalles 60 x 60 cm, avec raccord

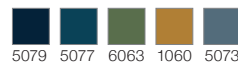


7056 9063 8071 8063 9062

15028-A02

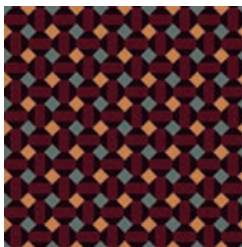


60er Fliesen, rapportgenau
60 x 60 tiles critical cut
Dalles 60 x 60 cm, avec raccord

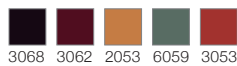


5079 5077 6063 1060 5073

15028-A03



60er Fliesen, rapportgenau
60 x 60 tiles critical cut
Dalles 60 x 60 cm, avec raccord



3068 3062 2053 6059 3053

Verlegung

Anordnung der Fliesen zufällig,
auch im Versatz möglich

Laying

Pattern layout randomly,
also as half drop / half brick possible

Pose

L'ordre des dalles fortuit – il sera aussi
possible de poser en quinconce

Bitte beachten Sie, dass die in dieser Kollektion dargestellten Farben nur annähernd den tatsächlichen Teppichbodenfarben entsprechen. Verwenden Sie bitte unsere original Farbmuster.

Achtung: aus technischen Gründen ist ein Verspringen des Dessins von Fliese zu Fliese um ca. +/- 5mm nicht auszuschließen. Dies wird als Reklamationsgrund nicht anerkannt und ist ggf. vom Verleger auszugleichen.

Please note that colours in this printed brochure are approximate. For correct colours please refer to our colour samples.

Attention: For technical reasons we cannot completely exclude that the design skips from tile to tile by approx +/- 5 mm. This is not accepted as a reason for a claim and possibly has to be cleared by the layer.

Veillez noter que les couleurs représentées dans cette collection sont approximatives par rapport aux couleurs réelles. S'il vous plaît utiliser notre nuancier original.

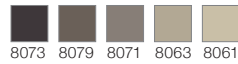
Attention: Pour des raisons techniques un pose en quinconce de dessin de dalle à dalle doit être toléré autour de +/- 5 mm. Ca ne représente pas un motif de réclamation et doit être corrigé éventuellement par le poseur.

RETRO

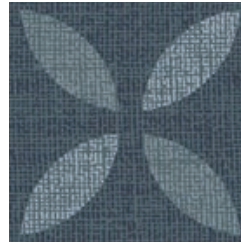
15024-A01



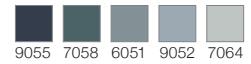
48er Fliesen, rapportgenau
48 x 48 tiles critical cut
Dalles 48 x 48 cm, avec raccord



15024-A02



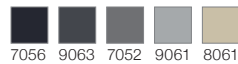
48er Fliesen, rapportgenau
48 x 48 tiles critical cut
Dalles 48 x 48 cm, avec raccord



15024-A03



48er Fliesen, rapportgenau
48 x 48 tiles critical cut
Dalles 48 x 48 cm, avec raccord



Verlegung

Anordnung der Fliesen zufällig,
auch im Versatz möglich

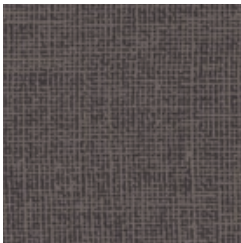
Laying

Pattern layout randomly,
also as half drop / half brick possible

Pose

L'ordre des dalles fortuit – il sera aussi
possible de poser en quinconce

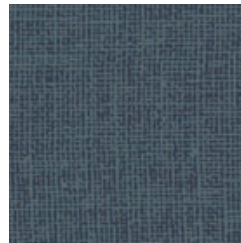
15025-A01



48er Fliesen, rapportgenau
48 x 48 tiles critical cut
Dalles 48 x 48 cm, avec raccord



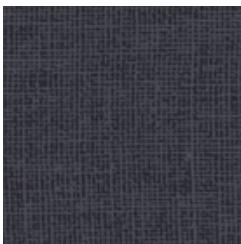
15025-A02



48er Fliesen, rapportgenau
48 x 48 tiles critical cut
Dalles 48 x 48 cm, avec raccord



15025-A03



48er Fliesen, rapportgenau
48 x 48 tiles critical cut
Dalles 48 x 48 cm, avec raccord



Verlegung

Anordnung der Fliesen zufällig,
auch im Versatz möglich

Laying

Pattern layout randomly,
also as half drop / half brick possible

Pose

L'ordre des dalles fortuit – il sera aussi
possible de poser en quinconce

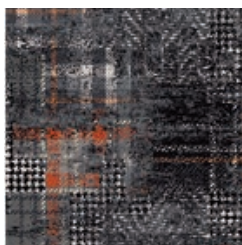
Diese Fliesen sind nur als Sets erhältlich. Die Abbildung zeigt jeweils eine beispielhafte Fliese aus jedem Set.

Tiles are only available as sets. The image shows respectively one sample from each set.

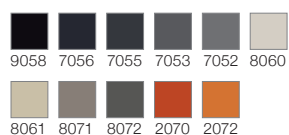
Les dalles seront seulement disponible dans un set. L'image montre respectivement une exemple de chaque set.

FRAGMENTS

15018-A01



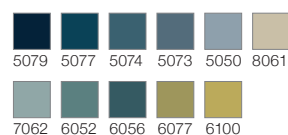
48er Fliesen, rapportgenau
48 x 48 tiles critical cut
Dalles 48 x 48 cm, avec raccord



15018-A02



48er Fliesen, rapportgenau
48 x 48 tiles critical cut
Dalles 48 x 48 cm, avec raccord



15018-A03



48er Fliesen, rapportgenau
48 x 48 tiles critical cut
Dalles 48 x 48 cm, avec raccord



Verlegung

Anordnung der Fliesen zufällig,
auch im Versatz möglich

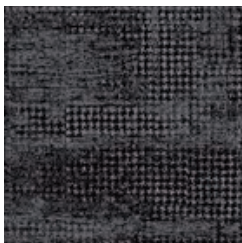
Laying

Pattern layout randomly,
also as half drop / half brick possible

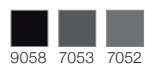
Pose

L'ordre des dalles fortuit – il sera aussi
possible de poser en quinconce

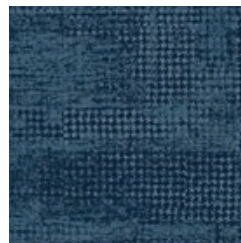
15019-A01



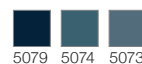
48er Fliesen, rapportgenau
48 x 48 tiles critical cut
Dalles 48 x 48 cm, avec raccord



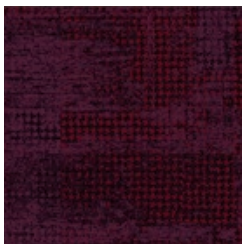
15019-A02



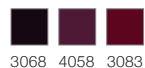
48er Fliesen, rapportgenau
48 x 48 tiles critical cut
Dalles 48 x 48 cm, avec raccord



15019-A03



48er Fliesen, rapportgenau
48 x 48 tiles critical cut
Dalles 48 x 48 cm, avec raccord



Verlegung

Anordnung der Fliesen zufällig,
auch im Versatz möglich

Laying

Pattern layout randomly,
also as half drop / half brick possible

Pose

L'ordre des dalles fortuit – il sera aussi
possible de poser en quinconce

Bitte beachten Sie, dass die in dieser Kollektion dargestellten Farben nur annähernd den tatsächlichen Teppichbodenfarben entsprechen. Verwenden Sie bitte unsere original Farbmuster.

Achtung: aus technischen Gründen ist ein Verspringen des Dessins von Fliese zu Fliese um ca. +/- 5mm nicht auszuschließen. Dies wird als Reklamationsgrund nicht anerkannt und ist ggf. vom Verleger auszugleichen.

Please note that colours in this printed brochure are approximate. For correct colours please refer to our colour samples.

Attention: For technical reasons we cannot completely exclude that the design skips from tile to tile by approx +/- 5 mm. This is not accepted as a reason for a claim and possibly has to be cleared by the layer.

Veuillez noter que les couleurs représentées dans cette collection sont approximatives par rapport aux couleurs réelles. S'il vous plaît utiliser notre nuancier original.

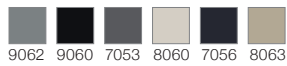
Attention: Pour des raisons techniques un pose en quinconce de dessin de dalle à dalle doit être toléré autour de +/- 5 mm. Ca ne représente pas un motif de réclamation et doit être corrigé éventuellement par le poseur.

FRAGMENTS

15010-A01



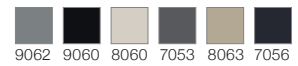
60er Fliesen, rapportgenau
60 x 60 tiles critical cut
Dalles 60 x 60 cm, avec raccord



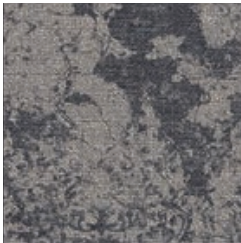
15012-A01



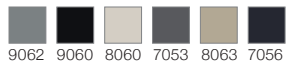
60er Fliesen, rapportgenau
60 x 60 tiles critical cut
Dalles 60 x 60 cm, avec raccord



15014-A01



60er Fliesen, rapportgenau
60 x 60 tiles critical cut
Dalles 60 x 60 cm, avec raccord



Verlegung

Anordnung der Fliesen zufällig,
auch im Versatz möglich

Laying

Pattern layout randomly,
also as half drop / half brick possible

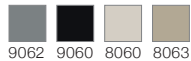
Pose

L'ordre des dalles fortuit – il sera aussi possible de poser en quinconce

15015-A01



60er Fliesen, rapportgenau
60 x 60 tiles critical cut
Dalles 60 x 60 cm, avec raccord



Verlegung

Anordnung der Fliesen zufällig,
auch im Versatz möglich

Laying

Pattern layout randomly,
also as half drop / half brick possible

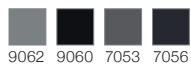
Pose

L'ordre des dalles fortuit – il sera aussi possible de poser en quinconce

15015-A02



60er Fliesen, rapportgenau
60 x 60 tiles critical cut
Dalles 60 x 60 cm, avec raccord



Diese Fliesen sind nur als Sets erhältlich. Die Abbildung zeigt jeweils eine beispielhafte Fliese aus jedem Set.

Tiles are only available as sets. The image shows respectively one sample from each set.

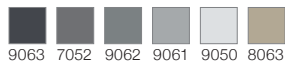
Les dalles seront seulement disponible dans un set. L'image montre respectivement une exemple de chaque set.

FRAGMENTS

15016-A01



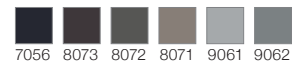
60er Fliesen, rapportgenau
60 x 60 tiles critical cut
Dalles 60 x 60 cm, avec raccord



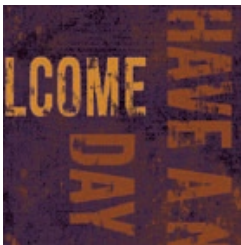
15016-A02



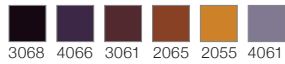
60er Fliesen, rapportgenau
60 x 60 tiles critical cut
Dalles 60 x 60 cm, avec raccord



15016-A03



60er Fliesen, rapportgenau
60 x 60 tiles critical cut
Dalles 60 x 60 cm, avec raccord



Verlegung

Anordnung der Fliesen zufällig,
auch im Versatz möglich

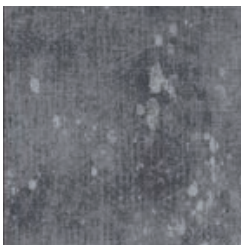
Laying

Pattern layout randomly,
also as half drop / half brick possible

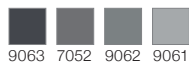
Pose

L'ordre des dalles fortuit – il sera aussi
possible de poser en quinconce

15017-A01



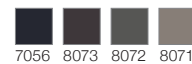
60er Fliesen, rapportgenau
60 x 60 tiles critical cut
Dalles 60 x 60 cm, avec raccord



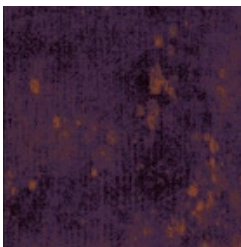
15017-A02



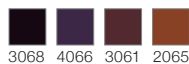
60er Fliesen, rapportgenau
60 x 60 tiles critical cut
Dalles 60 x 60 cm, avec raccord



15017-A03



60er Fliesen, rapportgenau
60 x 60 tiles critical cut
Dalles 60 x 60 cm, avec raccord



Verlegung

Anordnung der Fliesen zufällig,
auch im Versatz möglich

Laying

Pattern layout randomly,
also as half drop / half brick possible

Pose

L'ordre des dalles fortuit – il sera aussi
possible de poser en quinconce

Bitte beachten Sie, dass die in dieser Kollektion dargestellten Farben nur annähernd den tatsächlichen Teppichbodenfarben entsprechen. Verwenden Sie bitte unsere original Farbmuster.

Please note that colours in this printed brochure are approximate. For correct colours please refer to our colour samples.

Veillez noter que les couleurs représentées dans cette collection sont approximatives par rapport aux couleurs réelles. S'il vous plaît utiliser notre nuancier original.

Achtung: aus technischen Gründen ist ein Verspringen des Dessins von Fliese zu Fliese um ca. +/- 5mm nicht auszuschließen. Dies wird als Reklamationsgrund nicht anerkannt und ist ggf. vom Verleger auszugleichen.

Attention: For technical reasons we cannot completely exclude that the design skips from tile to tile by approx +/- 5 mm. This is not accepted as a reason for a claim and possibly has to be cleared by the layer.

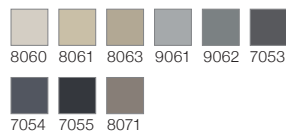
Attention: Pour des raisons techniques un pose en quinconce de dessin de dalle à dalle doit être toléré autour de +/- 5 mm. Ca ne représente pas un motif de réclamation et doit être corrigé éventuellement par le poseur.

FRAGMENTS

15008-A01



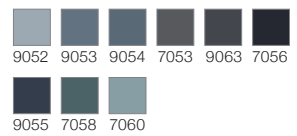
48er Fliesen, rapportgenau
48 x 48 tiles critical cut
Dalles 48 x 48 cm, avec raccord



15008-A02



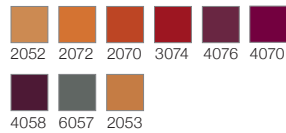
48er Fliesen, rapportgenau
48 x 48 tiles critical cut
Dalles 48 x 48 cm, avec raccord



15008-A03



48er Fliesen, rapportgenau
48 x 48 tiles critical cut
Dalles 48 x 48 cm, avec raccord



Verlegung

Anordnung der Fliesen zufällig,
auch im Versatz möglich

Laying

Pattern layout randomly,
also as half drop / half brick possible

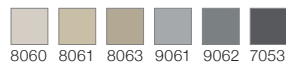
Pose

L'ordre des dalles fortuit – il sera aussi possible de poser en quinconce

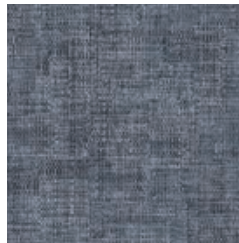
15009-A01



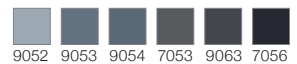
48er Fliesen, rapportgenau
48 x 48 tiles critical cut
Dalles 48 x 48 cm, avec raccord



15009-A02



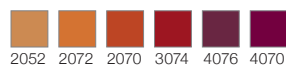
48er Fliesen, rapportgenau
48 x 48 tiles critical cut
Dalles 48 x 48 cm, avec raccord



15009-A03



48er Fliesen, rapportgenau
48 x 48 tiles critical cut
Dalles 48 x 48 cm, avec raccord



Verlegung

Anordnung der Fliesen zufällig,
auch im Versatz möglich

Laying

Pattern layout randomly,
also as half drop / half brick possible

Pose

L'ordre des dalles fortuit – il sera aussi possible de poser en quinconce

Diese Fliesen sind nur als Sets erhältlich. Die Abbildung zeigt jeweils eine beispielhafte Fliese aus jedem Set.

Tiles are only available as sets. The image shows respectively one sample from each set.

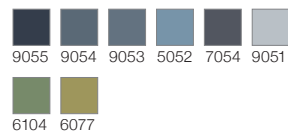
Les dalles seront seulement disponible dans un set. L'image montre respectivement une exemple de chaque set.

TEXTILE

15052-A01



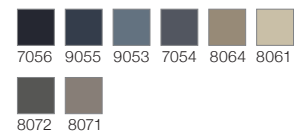
60er Fliesen, rapportgenau
60 x 60 tiles critical cut
Dalles 60 x 60 cm, avec raccord



15052-A02



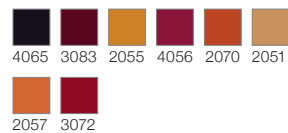
60er Fliesen, rapportgenau
60 x 60 tiles critical cut
Dalles 60 x 60 cm, avec raccord



15052-A03



60er Fliesen, rapportgenau
60 x 60 tiles critical cut
Dalles 60 x 60 cm, avec raccord



Verlegung

Anordnung der Fliesen zufällig,
auch im Versatz möglich

Laying

Pattern layout randomly,
also as half drop / half brick possible

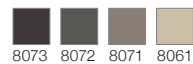
Pose

L'ordre des dalles fortuit – il sera aussi
possible de poser en quinconce

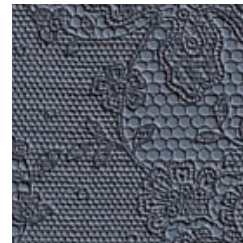
15060-A01



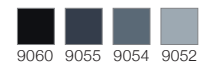
60er Fliesen, rapportgenau
60 x 60 tiles critical cut
Dalles 60 x 60 cm, avec raccord



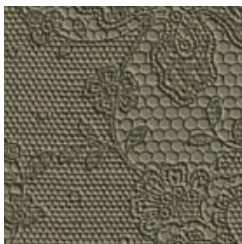
15060-A02



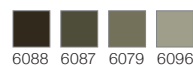
60er Fliesen, rapportgenau
60 x 60 tiles critical cut
Dalles 60 x 60 cm, avec raccord



15060-A03



60er Fliesen, rapportgenau
60 x 60 tiles critical cut
Dalles 60 x 60 cm, avec raccord



A	B	C	D	E	F
D	E	F	A	B	C
A	B	C	D	E	F
D	E	F	A	B	C
A	B	C	D	E	F
D	E	F	A	B	C

Verlegung

Anordnung der Fliesen regelmäßig

Laying

Pattern layout regularly

Pose

L'ordre des dalles régulièrement

Bitte beachten Sie, dass die in dieser Kollektion dargestellten Farben nur annähernd den tatsächlichen Teppichbodenfarben entsprechen. Verwenden Sie bitte unsere original Farbmuster.

Achtung: aus technischen Gründen ist ein Verspringen des Dessins von Fliese zu Fliese um ca. +/- 5mm nicht auszuschließen. Dies wird als Reklamationsgrund nicht anerkannt und ist ggf. vom Verleger auszugleichen.

Please note that colours in this printed brochure are approximate. For correct colours please refer to our colour samples.

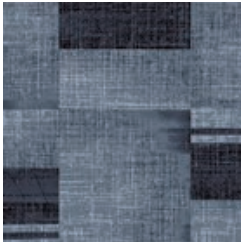
Attention: For technical reasons we cannot completely exclude that the design skips from tile to tile by approx +/- 5 mm. This is not accepted as a reason for a claim and possibly has to be cleared by the layer.

Veillez noter que les couleurs représentées dans cette collection sont approximatives par rapport aux couleurs réelles. S'il vous plaît utiliser notre nuancier original.

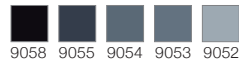
Attention: Pour des raisons techniques un pose en quinconce de dessin de dalle à dalle doit être toléré autour de +/- 5 mm. Ca ne représente pas un motif de réclamation et doit être corrigé éventuellement par le poseur.

TEXTILE

15058-A01



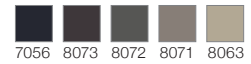
60er Fliesen, rapportgenau
60 x 60 tiles critical cut
Dalles 60 x 60 cm, avec raccord



15058-A02



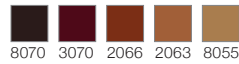
60er Fliesen, rapportgenau
60 x 60 tiles critical cut
Dalles 60 x 60 cm, avec raccord



15058-A03



60er Fliesen, rapportgenau
60 x 60 tiles critical cut
Dalles 60 x 60 cm, avec raccord



Verlegung

Anordnung der Fliesen zufällig,
auch im Versatz möglich

Laying

Pattern layout randomly,
also as half drop / half brick possible

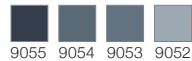
Pose

L'ordre des dalles fortuit – il sera aussi possible de poser en quinconce

15059-A01



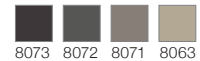
60er Fliesen, rapportgenau
60 x 60 tiles critical cut
Dalles 60 x 60 cm, avec raccord



15059-A02



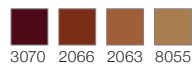
60er Fliesen, rapportgenau
60 x 60 tiles critical cut
Dalles 60 x 60 cm, avec raccord



15059-A03



60er Fliesen, rapportgenau
60 x 60 tiles critical cut
Dalles 60 x 60 cm, avec raccord



Verlegung

Anordnung der Fliesen zufällig,
auch im Versatz möglich

Laying

Pattern layout randomly,
also as half drop / half brick possible

Pose

L'ordre des dalles fortuit – il sera aussi possible de poser en quinconce

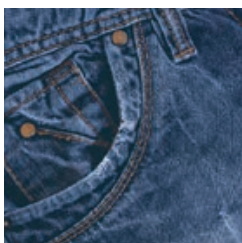
Diese Fliesen sind nur als Sets erhältlich. Die Abbildung zeigt jeweils eine beispielhafte Fliese aus jedem Set.

Tiles are only available as sets. The image shows respectively one sample from each set.

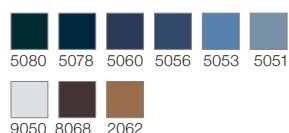
Les dalles seront seulement disponible dans un set. L'image montre respectivement une exemple de chaque set.

TEXTILE

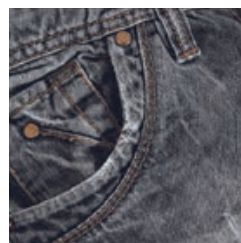
15054-A01



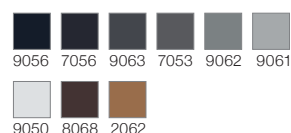
60er Fliesen, rapportgenau
60 x 60 tiles critical cut
Dalles 60 x 60 cm, avec raccord



15054-A02



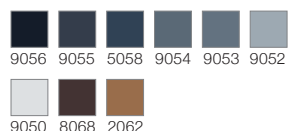
60er Fliesen, rapportgenau
60 x 60 tiles critical cut
Dalles 60 x 60 cm, avec raccord



15054-A03



60er Fliesen, rapportgenau
60 x 60 tiles critical cut
Dalles 60 x 60 cm, avec raccord



Verlegung

Anordnung der Fliesen zufällig,
auch im Versatz möglich

Laying

Pattern layout randomly,
also as half drop / half brick possible

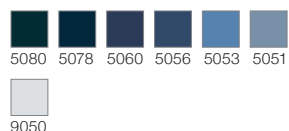
Pose

L'ordre des dalles fortuit – il sera aussi
possible de poser en quinconce

15056-A01



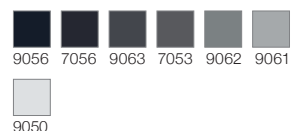
60er Fliesen, rapportgenau
60 x 60 tiles critical cut
Dalles 60 x 60 cm, avec raccord



15056-A02



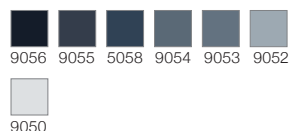
60er Fliesen, rapportgenau
60 x 60 tiles critical cut
Dalles 60 x 60 cm, avec raccord



15056-A03



60er Fliesen, rapportgenau
60 x 60 tiles critical cut
Dalles 60 x 60 cm, avec raccord



Verlegung

Anordnung der Fliesen zufällig,
auch im Versatz möglich

Laying

Pattern layout randomly,
also as half drop / half brick possible

Pose

L'ordre des dalles fortuit – il sera aussi
possible de poser en quinconce

Bitte beachten Sie, dass die in dieser Kollektion dargestellten Farben nur annähernd den tatsächlichen Teppichbodenfarben entsprechen. Verwenden Sie bitte unsere original Farbmuster.

Achtung: aus technischen Gründen ist ein Verspringen des Dessins von Fliese zu Fliese um ca. +/- 5mm nicht auszuschließen. Dies wird als Reklamationsgrund nicht anerkannt und ist ggf. vom Verleger auszugleichen.

Please note that colours in this printed brochure are approximate. For correct colours please refer to our colour samples.

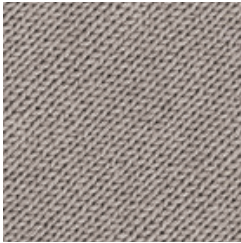
Attention: For technical reasons we cannot completely exclude that the design skips from tile to tile by approx +/- 5 mm. This is not accepted as a reason for a claim and possibly has to be cleared by the layer.

Veuillez noter que les couleurs représentées dans cette collection sont approximatives par rapport aux couleurs réelles. S'il vous plaît utiliser notre nuancier original.

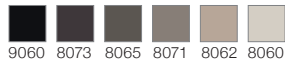
Attention: Pour des raisons techniques un pose en quinconce de dalle à dalle doit être toléré autour de +/- 5 mm. Ca ne représente pas un motif de réclamation et doit être corrigé éventuellement par le poseur.

TEXTILE

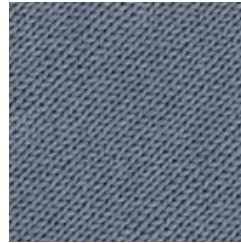
15046-A01



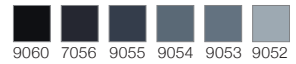
96er Fliesen, rapportgenau
96 x 96 tiles critical cut
Dalles 96 x 96 cm, avec raccord



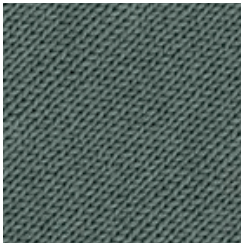
15046-A02



96er Fliesen, rapportgenau
96 x 96 tiles critical cut
Dalles 96 x 96 cm, avec raccord



15046-A03



96er Fliesen, rapportgenau
96 x 96 tiles critical cut
Dalles 96 x 96 cm, avec raccord



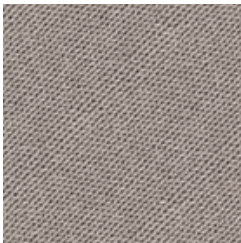
A	B	A	B
C	D	C	D
A	B	A	B
C	D	C	D

Verlegung
Anordnung der Fliesen regelmäßig

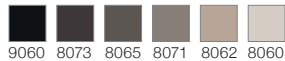
Laying
Pattern layout regularly

Pose
L'ordre des dalles régulièrement

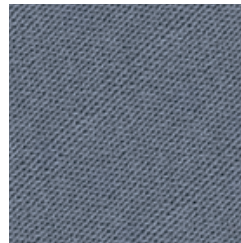
15048-A01



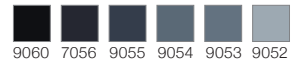
96er Fliesen, rapportgenau
96 x 96 tiles critical cut
Dalles 96 x 96 cm, avec raccord



15048-A02



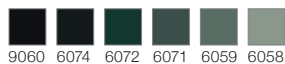
96er Fliesen, rapportgenau
96 x 96 tiles critical cut
Dalles 96 x 96 cm, avec raccord



15048-A03



96er Fliesen, rapportgenau
96 x 96 tiles critical cut
Dalles 96 x 96 cm, avec raccord



A	B	A	B
C	D	C	D
A	B	A	B
C	D	C	D

Verlegung
Anordnung der Fliesen regelmäßig

Laying
Pattern layout regularly

Pose
L'ordre des dalles régulièrement

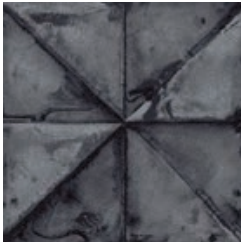
Diese Fliesen sind nur als Sets erhältlich. Die Abbildung zeigt jeweils eine beispielhafte Fliese aus jedem Set.

Tiles are only available as sets. The image shows respectively one sample from each set.

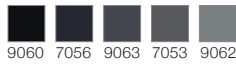
Les dalles seront seulement disponible dans un set. L'image montre respectivement une exemple de chaque set.

SURFACE

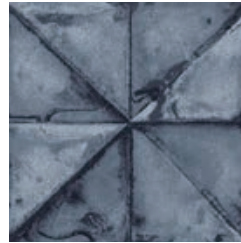
15040-A01



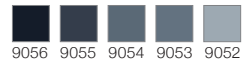
48er Fliesen, rapportgenau
48 x 48 tiles critical cut
Dalles 48 x 48 cm, avec raccord



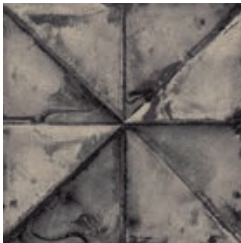
15040-A02



48er Fliesen, rapportgenau
48 x 48 tiles critical cut
Dalles 48 x 48 cm, avec raccord



15040-A03



48er Fliesen, rapportgenau
48 x 48 tiles critical cut
Dalles 48 x 48 cm, avec raccord



A	B	A	B	A	B	A	B
B	A	B	A	B	A	B	A
A	B	A	B	A	B	A	B
B	A	B	A	B	A	B	A
A	B	A	B	A	B	A	B
B	A	B	A	B	A	B	A
A	B	A	B	A	B	A	B
B	A	B	A	B	A	B	A

Verlegung
Anordnung der Fliesen regelmäßig

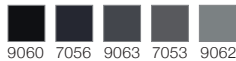
Laying
Pattern layout regularly

Pose
L'ordre des dalles régulièrement

15041-A01



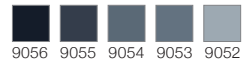
48er Fliesen, rapportgenau
48 x 48 tiles critical cut
Dalles 48 x 48 cm, avec raccord



15041-A02



48er Fliesen, rapportgenau
48 x 48 tiles critical cut
Dalles 48 x 48 cm, avec raccord



15041-A03



48er Fliesen, rapportgenau
48 x 48 tiles critical cut
Dalles 48 x 48 cm, avec raccord



A	B	A	B	A	B	A	B
C	D	C	D	C	D	C	D
A	B	A	B	A	B	A	B
C	D	C	D	C	D	C	D
A	B	A	B	A	B	A	B
C	D	C	D	C	D	C	D
A	B	A	B	A	B	A	B
C	D	C	D	C	D	C	D

Verlegung
Anordnung der Fliesen regelmäßig

Laying
Pattern layout regularly

Pose
L'ordre des dalles régulièrement

Bitte beachten Sie, dass die in dieser Kollektion dargestellten Farben nur annähernd den tatsächlichen Teppichbodenfarben entsprechen. Verwenden Sie bitte unsere original Farbmuster.

Achtung: aus technischen Gründen ist ein Verspringen des Dessins von Fliese zu Fliese um ca. +/- 5mm nicht auszuschließen. Dies wird als Reklamationsgrund nicht anerkannt und ist ggf. vom Verleger auszugleichen.

Please note that colours in this printed brochure are approximate. For correct colours please refer to our colour samples.

Attention: For technical reasons we cannot completely exclude that the design skips from tile to tile by approx +/- 5 mm. This is not accepted as a reason for a claim and possibly has to be cleared by the layer.

Veillez noter que les couleurs représentées dans cette collection sont approximatives par rapport aux couleurs réelles. S'il vous plaît utiliser notre nuancier original.

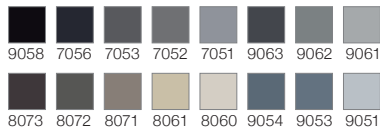
Attention: Pour des raisons techniques un pose en quinconce de dessin de dalle à dalle doit être toléré autour de +/- 5 mm. Ca ne représente pas un motif de réclamation et doit être corrigé éventuellement par le poseur.

SURFACE

15044-A01



60er Fliesen, rapportgenau
60 x 60 tiles critical cut
Dalles 60 x 60 cm, avec raccord



Verlegung

Anordnung der Fliesen zufällig,
auch im Versatz möglich

Laying

Pattern layout randomly,
also as half drop / half brick possible

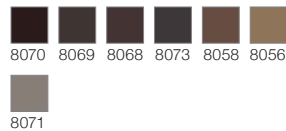
Pose

L'ordre des dalles fortuit – il sera aussi
possible de poser en quinconce

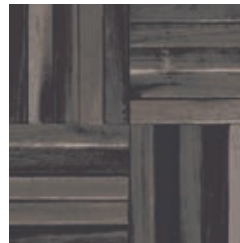
15034-A01



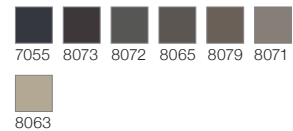
60er Fliesen, rapportgenau
60 x 60 tiles critical cut
Dalles 60 x 60 cm, avec raccord



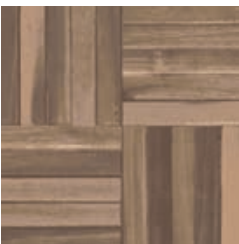
15034-A02



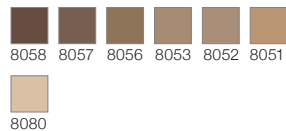
60er Fliesen, rapportgenau
60 x 60 tiles critical cut
Dalles 60 x 60 cm, avec raccord



15034-A03



60er Fliesen, rapportgenau
60 x 60 tiles critical cut
Dalles 60 x 60 cm, avec raccord



Verlegung

Anordnung der Fliesen zufällig

Laying

Pattern layout randomly

Pose

L'ordre des dalles fortuit

Diese Fliesen sind nur als Sets erhältlich. Die Abbildung zeigt jeweils eine beispielhafte Fliese aus jedem Set.

Tiles are only available as sets. The image shows respectively one sample from each set.

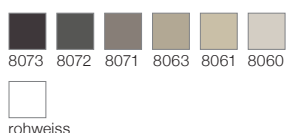
Les dalles seront seulement disponible dans un set. L'image montre respectivement une exemple de chaque set.

SURFACE

15038-A01



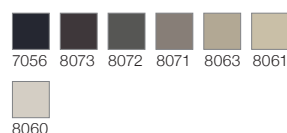
48er Fliesen, rapportgenau
48 x 48 tiles critical cut
Dalles 48 x 48 cm, avec raccord



15038-A02



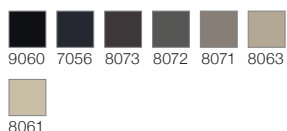
48er Fliesen, rapportgenau
48 x 48 tiles critical cut
Dalles 48 x 48 cm, avec raccord



15038-A03



48er Fliesen, rapportgenau
48 x 48 tiles critical cut
Dalles 48 x 48 cm, avec raccord



Verlegung

Anordnung der Fliesen zufällig,
auch im Versatz möglich

Laying

Pattern layout randomly,
also as half drop / half brick possible

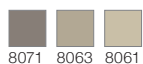
Pose

L'ordre des dalles fortuit – il sera aussi
possible de poser en quinconce

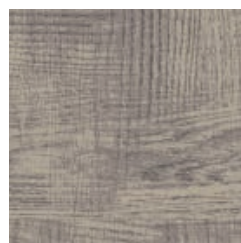
15039-A01



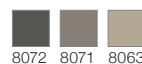
48er Fliesen, rapportgenau
48 x 48 tiles critical cut
Dalles 48 x 48 cm, avec raccord



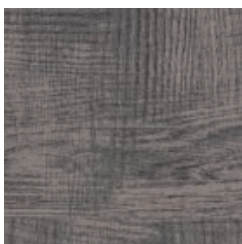
15039-A02



48er Fliesen, rapportgenau
48 x 48 tiles critical cut
Dalles 48 x 48 cm, avec raccord



15039-A03



48er Fliesen, rapportgenau
48 x 48 tiles critical cut
Dalles 48 x 48 cm, avec raccord



Verlegung

Anordnung der Fliesen zufällig,
auch im Versatz möglich

Laying

Pattern layout randomly,
also as half drop / half brick possible

Pose

L'ordre des dalles fortuit – il sera aussi
possible de poser en quinconce

Bitte beachten Sie, dass die in dieser Kollektion dargestellten Farben nur annähernd den tatsächlichen Teppichbodenfarben entsprechen. Verwenden Sie bitte unsere original Farbmuster.

Achtung: aus technischen Gründen ist ein Verspringen des Dessins von Fliese zu Fliese um ca. +/- 5mm nicht auszuschließen. Dies wird als Reklamationsgrund nicht anerkannt und ist ggf. vom Verleger auszugleichen.

Please note that colours in this printed brochure are approximate. For correct colours please refer to our colour samples.

Attention: For technical reasons we cannot completely exclude that the design skips from tile to tile by approx +/- 5 mm. This is not accepted as a reason for a claim and possibly has to be cleared by the layer.

Veillez noter que les couleurs représentées dans cette collection sont approximatives par rapport aux couleurs réelles. S'il vous plaît utiliser notre nuancier original.

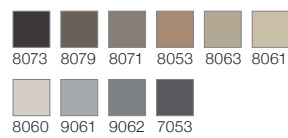
Attention: Pour des raisons techniques un pose en quinconce de dessin de dalle à dalle doit être toléré autour de +/- 5 mm. Ca ne représente pas un motif de réclamation et doit être corrigé éventuellement par le poseur.

SURFACE

15036-A01



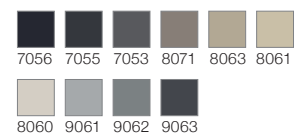
96er Fliesen, rapportgenau
96 x 96 tiles critical cut
Dalles 96 x 96 cm, avec raccord



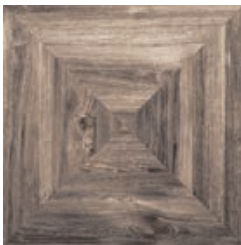
15036-A02



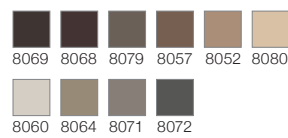
96er Fliesen, rapportgenau
96 x 96 tiles critical cut
Dalles 96 x 96 cm, avec raccord



15036-A03



96er Fliesen, rapportgenau
96 x 96 tiles critical cut
Dalles 96 x 96 cm, avec raccord



Verlegung

Anordnung der Fliesen zufällig

Laying

Pattern layout randomly

Pose

L'ordre des dalles fortuit

Diese Fliesen sind nur als Sets erhältlich. Die Abbildung zeigt jeweils eine beispielhafte Fliese aus jedem Set.

Tiles are only available as sets. The image shows respectively one sample from each set.

Les dalles seront seulement disponible dans un set. L'image montre respectivement une exemple de chaque set.

SURFACE

15042-A01



48er Fliesen, rapportgenau
48 x 48 tiles critical cut
Dalles 48 x 48 cm, avec raccord



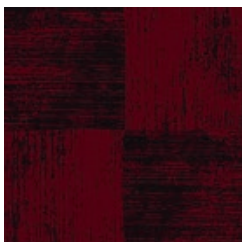
15042-A02



48er Fliesen, rapportgenau
48 x 48 tiles critical cut
Dalles 48 x 48 cm, avec raccord



15042-A03



48er Fliesen, rapportgenau
48 x 48 tiles critical cut
Dalles 48 x 48 cm, avec raccord



Verlegung

Anordnung der Fliesen zufällig

Laying

Pattern layout randomly

Pose

L'ordre des dalles fortuit

15043-A01



48er Fliesen, rapportgenau
48 x 48 tiles critical cut
Dalles 48 x 48 cm, avec raccord



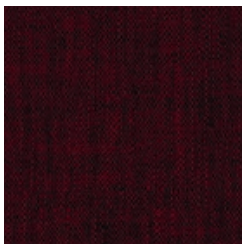
15043-A02



48er Fliesen, rapportgenau
48 x 48 tiles critical cut
Dalles 48 x 48 cm, avec raccord



15043-A03



48er Fliesen, rapportgenau
48 x 48 tiles critical cut
Dalles 48 x 48 cm, avec raccord



Verlegung

Anordnung der Fliesen zufällig,
auch im Versatz möglich

Laying

Pattern layout randomly,
also as half drop / half brick possible

Pose

L'ordre des dalles fortuit – il sera aussi
possible de poser en quinconce